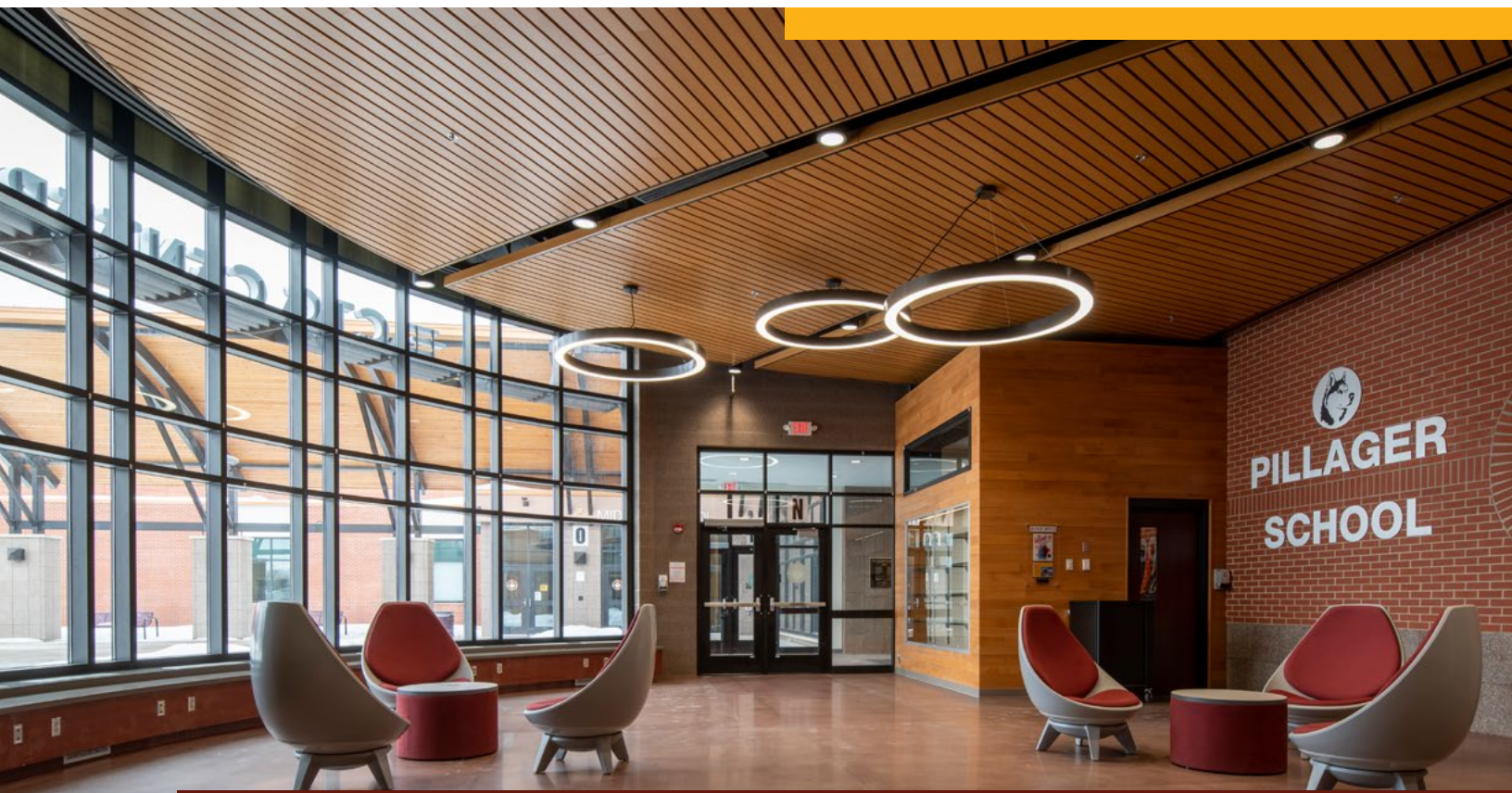




2023-24

COURSE REGISTRATION GUIDE



Registration Information for Students Entering Grades 9-12



DIRECTORY

Principal, Jason Savage.....	218.746.2117
Activities Director, Matt Moen.....	218.746.2115
School Counselor, Sue Turner.....	218.746.2116
General Information.....	218.746.3557
HS Administrative Assistant, Brittney Lunday.....	218.746.2113

TABLE OF CONTENTS

Daily Schedule & Registration Tips.....	2
Registration Guidelines.....	3
Selecting Classes — Make A Plan	4
Graduation Requirements	
Electives	
Choosing a Career Pathway.....	6
College Credit while in High School.....	26
CIS (College in the Schools)	
Articulated Courses & Tech Prep Agreements	
PSEO (Post-Secondary Enrollment Option)	
Online College Courses	
Athletic Participation in College (NCAA Clearinghouse)	
Pillager Career Academies.....	29
Assessments and Testing Requirements.....	30
Course Descriptions	31
Agriculture	
Art	
Business Education & Computers	
College & Career Readiness	
English	
Family & Consumer Science (FACS)	
Industrial Technology	
Mathematics	
Music	
Physical Education and Health	
Science	
Social Studies	
World Languages	
Perforated Pages	
Registration Pages	
Credit Inventory & Four-Year Plan	

DAILY SCHEDULE

Pillager Senior High School operates on a seven period day. Courses run for approximately 50 minutes per day for one semester (18 weeks). There are two semesters each year. Some courses are two semesters in length (year-long courses). Every student is scheduled for seven periods per day. The school day begins at 8:20 am and ends at 3:10 pm.

REGISTRATION TIPS

- Students need to review their choices carefully, as the completed registration form is a “contract.” The registration choices will be used to plan the master schedule and staffing for the upcoming school year.
- Alternate choices are extremely important! If alternate courses are not listed, office staff will choose your alternate to complete your schedule. Please leave plenty of alternate courses!
- Students should discuss the Course Registration Guide with parents and/or guardians.



REGISTRATION GUIDELINES

1. Students will register during the spring of 2023 for the 2023-2024 school year.
2. Using this registration guide, students should review the required graduation credits when deciding on courses to check on the registration form. The Credit Inventory page is very helpful in this regard. If you have questions about the credit requirements please make sure you make an appointment with Mrs. Turner, the High School Counselor.
3. In order to maintain class sizes that are as reasonable as possible, sections will be closed when they are full. At that time, students will be placed in alternate classes. All seniors will be guaranteed placement in the courses that they need for graduation.
4. **Repeating required courses/STEPS.** Using the Course Registration Guide, students should check every course that was required in prior years. If a student received an “F” or an “NC” in a required course, either fall or spring semester, they may be placed in our STEPS Credit Recovery program. Students who fail a required course late in the school year must communicate with Mrs. Turner immediately upon learning about the failing grade. Students are responsible for ensuring that failed courses are rescheduled for the following year and/or are placed in the STEPS program. Students can obtain an unofficial copy of their transcript by logging in to their student account in JMC.
5. **Registering for upper-level courses.** Freshman and sophomore students may petition to register for junior or senior level courses by first contacting the counselor. Mrs. Turner will review the request with the principal, who will have the final determination in either granting or denying the request. All requests will be reviewed on a case-by-case basis.
6. **Final Scheduling**
Students are required to take the courses for which they register; therefore, it is important that they give serious consideration to their elective choices. Classes placed in the final schedule are determined by:
 - a. The number of students requesting the course.
 - b. The availability of an instructor for the course.
 - c. The availability of a room for the course.
7. **Scheduling Changes**
Students will be allowed the first two days of the semester to drop or add courses.

SELECTING CLASSES – MAKE A PLAN!

There are requirements to graduate from Pillager High School in the subjects of English, social studies, math, science, physical education and health, CTE (College Technical Education), and fine arts. Students must also accumulate a minimum of 20 elective credits, for a total of 52 semester credits. Several of the required classes are grade specific. As required classes, all of these courses have been deemed vital for your success regardless of the career path you choose.



Use your 4-year planning guide at the end of this booklet to map out your requirements and determine electives to add to graduate and prepare yourself for your career.

Pillager High School Graduation Requirements

	GRADE 9	GRADE 10	GRADE 11	GRADE 12
ENGLISH (8)	Intro to Lang Arts (2 credits)	U.S. Lit & Comp (2 credits)	College Comp. I & II (4 credits) OR World Literature & Composition (2 credits)	2 English Electives (1 credit each)
SOCIAL (7)	Civics (2 credits)	U.S. History (2 credits)	College World History I/II (1 credit per semester) OR World History (2 credits)	Economics (1 credit)
MATH (6)	Intermediate Algebra (2 credits)	Geometry (2 credits)	Algebra II (2 credits) OR Beginning College & College Algebra (2 credits)	
SCIENCE (6)	Physical Science (2 credits)	General Biology (2 credits)	Science Elective (1 credit)	Science Elective with chemistry or physics component (1 credit)
PHYSICAL EDUCATION (1)	1 credit of Physical Education (any grade 9-12)			
Health (1)	1 credit of Health (any grade 9-12)			
CTE (2)	2 credits of CTE (any grade 9-12)			
FINE ARTS (1)	1 credit of Fine Arts (any grade 9-12)			
ELECTIVE CREDITS (20)	Elective credits will be earned throughout the high school years in grades 9-12			
TOTAL CREDITS A STUDENT CAN EARN IN A YEAR	14 credits	14 credits	14 credits	14 Credits
MINIMUM TO GRADUATE				52 Credits

Pillager High School Electives

The non-required courses are called electives. Elective classes provide a snapshot into skills and experiences that can help you determine the type of career for which you are best suited. These classes can also help develop hobbies. Every student can participate in several electives each year.

Courses are organized into career pathways following the guidelines of the MN Career Fields, Clusters, and Pathways chart (shown at right). Career fields are identified in the outer segmented ring. The class lists below are not an exhaustive list of all of the electives that are available.



Career fields:

- Agriculture, Food, and Natural Resources
- Arts, Communications, and Information Systems
- Engineering, Manufacturing, and Technology
- Health Science Technology
- Human Services
- Business, Management, and Administration

Visit your career advisor, MCIS account, or your school counselor to learn more about specific classes and career options related to the career fields.

Agriculture, Food, and Natural Resources

Science:

- Natural Resources I & II
- Food Chemistry
- Intro to Agriculture
- Greenhouse Management
- Animal Science
- Intro to Landscaping
- Vet Technology

Arts, Communications, and Information Systems

Art:

- Drawing
- Studio Art
- Painting
- Clay & Sculpture
- Graphic Design

Business:

- Desktop Publishing
- Digital Photo
- Intro to Business
- Intro to Computers I & II
- Web design

English:

- Intro to Literature
- Science Fiction & Fantasy

World Languages

- Spanish I & II

Engineering, Manufacturing, and Technology

Industrial Tech:

- Cabinet/Furniture
- Robotics
- Construction Trades
- Power & Transportation
- Intro to Trades
- Welding & Metals

Math:

- College Algebra
- Pre-Calculus
- Calculus I
- Trades Math
- Intro to General Statistics

Health Science Technology

Science:

- Food Chemistry
- Chemistry I & II
- Human Anatomy

PE & Health:

- Health & Wellness
- Lifetime Sports
- Outdoor Activities
- Sports & Fitness
- Lifetime Sports
- Sports Training

Human Services

Science:

- Forensic Science
- Crime Scene Investigation
- Criminal Justice

Social Studies:

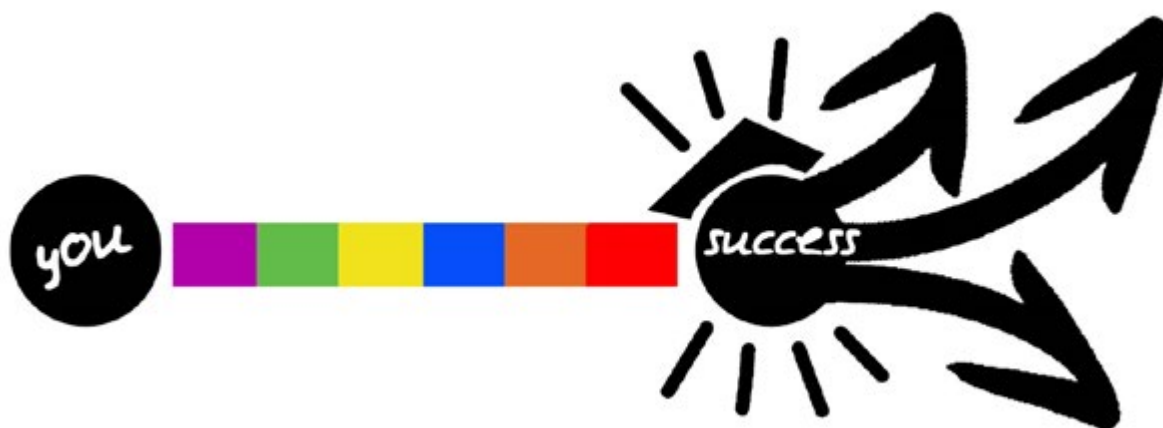
- World History I & II
- Current Events
- Global Studies

Business, Management, and Administration

Business:

- Accounting for Non-Accountants
- ProStart I-IV
- Business Law
- Hospitality & Tourism

CHOOSING A CAREER PATHWAY



As you consider career options, investigate what sort of educational requirements are needed for your career of choice, and consider what types of work experiences you can participate in while in high school to better prepare yourself for your career.

College Path

If college is what is needed to pursue your career goals, it is important to register for high school classes that will satisfy the entrance requirements for potential college or university institutions. These requirements can vary among different institutions and among programs within the same institution. It is the *responsibility of the student* to become familiar with the entrance requirements of potential institutions to which they wish to apply. Talk with admission representatives that visit PHS or contact potential institutions directly. Students are strongly encouraged to arrange a campus visit to those colleges that they may be considering. Admissions factors considered by post-secondary institutions may include cumulative grade point average (GPA), grade point average in challenging courses, class rank, high school course selection, exam scores (ACT, SAT, ASVAB, or Accuplacer), leadership in school and community activities, personal essays, and teacher recommendations.

Career Path

Many positions in Central Minnesota may be started right out of high school, with a certificate, or with minimal training. Registering for electives in a specific career field will provide experiences and knowledge to help determine a student's career path. While still in high school, students can take a work experience seminar that prepares them for work experiences to earn high school credit. Students along with school staff can also arrange job apprenticeships and internships for credit. Job shadowing opportunities can also provide knowledge and experience about a typical day in a specific career. Pillager High School is committed to increasing career and technical education opportunities for all students.

Military

All military branches require a high school diploma for entrance. Students interested in the military are encouraged to visit with a military recruiter for information. Recruiters often come on campus to visit with potential soldiers. Students interested in pursuing a military career will have the opportunity to take the ASVAB as a junior to complete the military assessment requirement. Please listen to announcements for upcoming meeting dates.

CAREER PATHS IN AGRICULTURE AND FOOD INDUSTRY

1-2 YEAR COLLEGE DEGREE (OR CREDENTIAL)

Diesel Engine Specialists \$19.85	Agricultural Inspectors \$21.62
Farm Equipment Mechanics and Service Technicians \$19.87	Heavy & Tractor Trailer Truck Drivers \$19.84

4-YEAR OR MORE COLLEGE DEGREE AND/OR EQUIVALENT EXPERIENCE

Agricultural and Food Science Technicians \$17.71	Veterinarians \$29.72
Precision Agricultural Technicians \$23.12	Biological Technicians \$21.88

HIGH SCHOOL DIPLOMA OR GED AND/ OR EXPERIENCE

Farmers, Ranchers, and Other Agricultural Managers \$33.47	Farmworkers and Laborers, Crop, Nursery, and Greenhouse \$15.52
Slaughterers and Meat Packers \$13.54	Agricultural Equipment Operators \$19.59

These jobs are in demand in Northwest Minnesota and these are Northwest Minnesota Median wages. Data collected from Department of Employment and Economic Development.

WHY CHOOSE A CAREER IN AG?

The Agriculture and Food Industry is the 2nd largest employer in Minnesota which includes 367,000 jobs that are directly and indirectly related to the industry.

Northwest PIC^{inc}



Affirmative Action/Equal Opportunity Employer/Americans with Disability Act.
Upon request this form is available in alternative formats. Contact: amys@rmcep.com

January 2019

CAREER PATHS IN AGRICULTURE AND FOOD INDUSTRY

4-YEAR OR MORE COLLEGE DEGREE AND/OR EQUIVALENT EXPERIENCE

Agricultural and Food Science Technicians \$17.71 Work with agricultural and food scientists in food, fiber, and animal research, production, and processing; and assist with animal breeding and nutrition. Conduct tests and experiments to improve yield and quality of crops or to increase the resistance of plants and animals to disease or insects. Includes technicians who assist food scientists or technologists in the research and development of production technology, quality control, packaging, processing, and use of foods.

Precision Agriculture Technicians \$23.12 Apply geospatial technologies, including geographic information systems (GIS) and Global Positioning System (GPS), to agricultural production or management activities, such as pest scouting, site-specific pesticide application, yield mapping, or variable-rate irrigation. May use computers to develop or analyze maps or remote sensing images to compare physical topography with data on soils, fertilizer, pests, or weather.

Veterinarians \$29.72 Diagnose, treat, or research diseases and injuries of animals. Includes veterinarians who conduct research and development, inspect livestock, or care for pets and companion animals.

Biological Technicians \$21.88 Assist biological and medical scientists in laboratories. Set up, operate, and maintain laboratory instruments and equipment, monitor experiments, make observations, and calculate and record results. May analyze organic substances, such as blood, food, and drugs.

1-2 YEAR COLLEGE DEGREE (OR CREDENTIAL)

Diesel Engine Specialists \$19.85 Diagnose, adjust, repair, or overhaul buses and trucks, or maintain and repair any type of diesel engines. Includes mechanics working primarily with automobile or farm equipment and construction diesel engines.

Farm Equipment Mechanics and Service Technicians \$19.87 Diagnose, adjust, repair, or overhaul farm machinery and vehicles, such as tractors, harvesters, dairy equipment, and irrigation systems.

Agricultural Inspectors \$21.62 Inspect agricultural commodities, processing equipment, and facilities, and fish and logging operations, to ensure compliance with regulations and laws governing health, quality, and safety.

Heavy & Tractor Trailer Truck Drivers \$19.84 Drive a tractor-trailer combination or a truck with a capacity of at least 26,000 pounds Gross Vehicle Weight (GVW). May be required to unload truck. Requires commercial drivers' license.

HIGH SCHOOL DIPLOMA OR GED AND/ OR EXPERIENCE

Farmers, Ranchers, and Other Agricultural Managers \$33.47 Plan, direct, or coordinate the management or operation of farms, ranches, greenhouses, aquacultural operations, nurseries, timber tracts, or other agricultural establishments. May hire, train, and supervise farm workers or contract for services to carry out the day-to-day activities of the managed operation. May engage in or supervise planting, cultivating, harvesting, and financial and marketing activities.

Slaughterers and Meat Packers \$13.54 Plan, direct, or coordinate the management or operation of farms, ranches, greenhouses, aquacultural operations, nurseries, timber tracts, or other agricultural establishments. May hire, train, and supervise farm workers or contract for services to carry out the day-to-day activities of the managed operation. May engage in or supervise planting, cultivating, harvesting, and financial and marketing activities.

Farmworkers and Laborers, Crop, Nursery, and Greenhouse \$15.52 Plan, direct, or coordinate the management or operation of farms, ranches, greenhouses, aquacultural operations, nurseries, timber tracts, or other agricultural establishments. May hire, train, and supervise farm workers or contract for services to carry out the day-to-day activities of the managed operation. May engage in or supervise planting, cultivating, harvesting, and financial and marketing activities.

Agricultural Equipment Operators \$19.59 Drive and control farm equipment to till soil and to plant, cultivate, and harvest crops. May perform tasks, such as crop baling or hay bucking. May operate stationary equipment to perform post-harvest tasks, such as husking, shelling, threshing, and ginning.

CAREER PATHS IN MANUFACTURING

4-YEAR OR MORE COLLEGE DEGREE AND/OR EQUIVALENT EXPERIENCE

Industrial Engineers
\$38.38
Mechanical Engineers
\$38.19

Sales Representatives,
Wholesale and
Manufacturing, Technical
and Scientific Products
\$28.40

1-2 YEAR COLLEGE DEGREE (OR CREDENTIAL)

Machinists
\$23.62
Industrial Machinery
Mechanics
\$29.75
Industrial Engineering
Technicians
\$24.15

HIGH SCHOOL DIPLOMA OR GED / ON-THE-JOB TRAINING

First-Line Supervisors/
Managers of Production
and Operating Workers
\$30.32

Packaging and Filling
Machine Operators
and Tenders
\$18.73

Welders, Cutters,
Solderers, and Brazers
\$23.55

WHY CHOOSE A CAREER IN MANUFACTURING?

Manufacturing provides 13 percent of all total employment in the region, making it the second largest industry in the region, just under healthcare and social assistance. Average wages in manufacturing are more than \$10,000 higher than the overall regional average in the Northwest region.

Northwest PIC^{inc}

Rural
Minnesota
CEP
concentrated
employment
program, inc.

These jobs are in demand in Northwest Minnesota and these are Northwest Minnesota median wages. Data collected from Department of Employment and Economic Development.

November 2022

Equal Opportunity Employer and Program Provider - Upon request the information in this document can be made available in alternative formats by contacting Michael Fisher at michaelf@rmcep.com



CAREER PATHS IN MANUFACTURING

4-YEAR OR MORE COLLEGE DEGREE AND/OR EQUIVALENT EXPERIENCE

INDUSTRIAL ENGINEERS \$38.38 Design, develop, test, and evaluate integrated systems for managing industrial production processes, including human work factors, quality control, inventory control, logistics and material flow, cost analysis, and production coordination.

MECHANICAL ENGINEERS \$38.19 Perform engineering duties in planning and designing tools, engines, machines, and other mechanically functioning equipment. Oversee installation, operation, maintenance, and repair of equipment such as centralized heat, gas, water, and steam systems.

SALES REPRESENTATIVES, WHOLESALE AND MANUFACTURING, TECHNICAL AND SCIENTIFIC PRODUCTS \$28.40 Sell goods for wholesalers or manufacturers where technical or scientific knowledge is required in such areas as biology, engineering, chemistry, and electronics, normally obtained from at least 2 years of post-secondary education.

1-2-YEAR COLLEGE DEGREE (OR CREDENTIAL)

MACHINISTS \$23.62 Set up and operate a variety of machine tools to produce precision parts and instruments. Includes precision instrument makers who fabricate, modify, or repair mechanical instruments. May also fabricate and modify parts to make or repair machine tools or maintain industrial machines, applying knowledge of mechanics, mathematics, metal properties, layout, and machining procedures.

INDUSTRIAL MACHINERY MECHANICS \$29.75 Repair, install, adjust, or maintain industrial production and processing machinery or refinery and pipeline distribution systems.

INDUSTRIAL ENGINEERING TECHNICIANS \$24.15 Apply engineering theory and principles to problems of industrial layout or manufacturing production, under direction of engineering staff. May perform time and motion studies on worker operations in a variety of industries for purposes such as establishing standard production rates or improving efficiency.



HIGH SCHOOL DIPLOMA OR GED / ON-THE-JOB TRAINING

FIRST-LINE SUPERVISORS/MANAGERS OF PRODUCTION AND OPERATING WORKERS \$30.32

Directly supervise and coordinate the activities of production and operating workers, such as inspectors, precision workers, machine setters and operators, assemblers, fabricators, and plant and system operators. Excludes team or work leaders.

PACKAGING AND FILLING MACHINE OPERATORS AND TENDERS \$18.73 Operate or tend machines to prepare industrial or consumer products for storage or shipment. Includes cannery workers who pack food products.

WELDERS, CUTTERS, SOLDERERS, AND BRAZERS \$23.55 Use hand-welding, flame-cutting, hand soldering, or brazing equipment to weld or join metal components or to fill holes, indentations, or seams of fabricated metal products.

In Demand Manufacturing Careers

CNC PROGRAMMER AND MACHINISTS

EDUCATION

Some operators are trained on basic machine operations and functions in a few months. Other workers, such as computer-controlled machine tool operators, may need up to two years to become trained.

IMPORTANT QUALITIES

- High degree of autonomy
- Troubleshooting
- Integrity
- Industrial automation
- Process management
- Data entry

WHAT THEY DO

Operate programming software to generate computer numerically controlled (CNC) programs used to control CNC machine tools that drill, mill, rout, grind, or notch.

EMPLOYMENT OPPORTUNITIES

MEDIAN HOURLY WAGES **\$21.89** **\$30.07** TO

Demand is expected to be strong, as many firms are adopting technologies such as machine tools and robots.

WORK ENVIRONMENT

These workers often operate powerful, high-speed machines. Operators usually wear protective equipment, such as safety glasses, earplugs, and steel-toed boots to protect them from flying particles of metal or plastic, machine noise, and heavy objects.

WELDERS

High school diploma or equivalent, combined with technical training and on the job training, welding certificate

- Detail oriented
- Self-starting / Self-motivated
- Problem solving
- Integrity
- Dependability
- Team player
- Work independently
- Basic computer skills

Responsible for assembling structural metal products using tools, welding equipment, and their own hands.

MEDIAN HOURLY WAGES **\$23.34** **\$24.21** TO

Types of welders in demand: arc and gas welding

Welders and cutters may work outdoors, or indoors, sometimes in a confined area designed to contain sparks and glare.

Most welders work full time, and overtime is common.

Northwest PIC Inc

Rural Minnesota CEP
Concentrated employment program, inc.

Equal Opportunity Employer and Program Provider - Upon request the information in this document can be made available in alternative formats for people with disabilities by contacting Michael Fisher at michael@rmcep.com

CAREER PATHS IN CONSTRUCTION

4-YEAR OR MORE COLLEGE DEGREE AND/OR EQUIVALENT EXPERIENCE



Construction Manager
\$39.73

Architect
\$37.14

Civil Engineer
\$37.89



1-2 YEAR COLLEGE DEGREE OR APPRENTICESHIP

Heating, Air Conditioning & Refrigeration Mechanic and Installer
\$24.93

Plumber, Pipefitter, & Steamfitter
\$26.96

Electrician
\$23.55



HIGH SCHOOL DIPLOMA OR GED / ON-THE-JOB-TRAINING



Construction Supervisor
\$32.83

Cement Mason & Concrete Finisher
\$22.74

Construction Laborer
\$16.88

Carpenter
\$19.55

Brick Mason & Block Mason
\$32.01

These jobs are in demand in Northwest Minnesota and these are Northwest Minnesota Median wages. Data collected from Department of Employment and Economic Development.

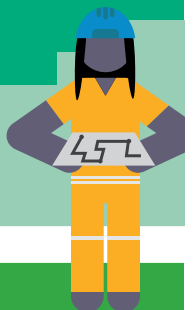


WHY CHOOSE A CAREER IN CONSTRUCTION?



- Steady, Booming Industry
- Fulfilling Career Choice
- Abundant Opportunities
- Feel a Sense of Accomplishment

- Make an Impact on Your Community
- Stay in Shape
- Earn a Great Income



Northwest PICinc



View videos of construction workers in these occupations:
www.careeronestop.org/Videos/CareerVideos/career-videos.aspx

Affirmative Action/ Equal Opportunity Employer/ Americans with Disability Act.

Upon request this form is available in alternative formats.

Contact: amys@rmcep.com

October 2018

CAREER PATHS IN CONSTRUCTION



4-YEAR OR MORE COLLEGE DEGREE AND/OR EQUIVALENT EXPERIENCE

CONSTRUCTION MANAGER \$39.73

Plan, direct, or coordinate, usually through subordinate supervisory personnel, activities concerned with the construction and maintenance of structures, facilities, and systems. Participate in the conceptual development of a construction project and oversee its organization, scheduling, budgeting, and implementation. Includes managers in specialized construction fields, such as carpentry or plumbing.

ARCHITECT \$37.14

Plan and design structures, such as private residences, office buildings, theaters, factories, and other structural property.

CIVIL ENGINEER \$37.89 Perform engineering duties in planning, designing, and overseeing construction and maintenance of building structures, and facilities, such as roads, railroads, airports, bridges, harbors, channels, dams, irrigation projects, pipelines, power plants, and water and sewage systems.

1-2 YEAR COLLEGE DEGREE OR APPRENTICESHIP

HEATING, AIR CONDITIONING & REFRIGERATION MECHANIC AND INSTALLER \$24.93

Install or repair heating, central air conditioning, or refrigeration systems, including oil burners, hot-air furnaces, and heating stoves.

PLUMBER, PIPEFITTER, & STEAMFITTER \$26.96

Assemble, install, alter, and repair pipelines or pipe systems that carry water, steam, air, or other liquids or gases. May install heating and cooling equipment and mechanical control systems.

ELECTRICIAN \$23.55

Install, maintain, and repair electrical wiring, equipment, and fixtures. Ensure that work is in accordance with relevant codes. May install or service street lights, intercom systems, or electrical control systems.



HIGH SCHOOL DIPLOMA OR GED AND/ OR EXPERIENCE

CONSTRUCTION SUPERVISOR \$32.83

Directly supervise and coordinate activities of construction or extraction workers.

CARPENTER \$19.55 Construct, erect, install, or repair structures and fixtures made of wood, such as concrete forms; building frameworks, including partitions, joists, studding, and rafters; and wood stairways, window and door frames, and hardwood floors. May also install cabinets, siding, drywall and batt or roll insulation.

CEMENT MASON & CONCRETE FINISHER \$22.74

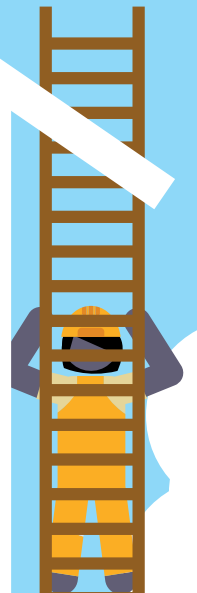
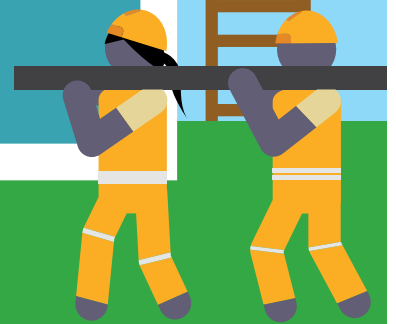
Smooth and finish surfaces of poured concrete, such as floors, walks, sidewalks, roads, or curbs using a variety of hand and power tools. Align forms for sidewalks, curbs, or gutters; patch voids; and use saws to cut expansion joints.

BRICK MASON & BLOCK MASON \$32.01

Lay and bind building materials, such as brick, structural tile, concrete block, cinder block, glass block, and terra-cotta block, with mortar and other substances to construct or repair walls, partitions, arches, sewers, and other structures.

CONSTRUCTION LABORER \$16.88

Perform tasks involving physical labor at construction sites. May operate hand and power tools of all types: air hammers, earth tampers, cement mixers, small mechanical hoists, surveying and measuring equipment, and a variety of other equipment and instruments. May clean and prepare sites, dig trenches, and set braces to support the sides of excavations.



CAREER PATHS IN HEALTH CARE

4-YEAR OR MORE COLLEGE DEGREE AND/OR EQUIVALENT EXPERIENCE

Medical and Health
Services Managers
\$46.10

Physical Therapists
\$39.78

1-2-YEAR COLLEGE DEGREE (OR CREDENTIAL)

Registered Nurses
\$37.36

Nursing Assistants
\$18.34

Licensed Practical and
Licensed Vocational
Nurses
\$23.29

HIGH SCHOOL DIPLOMA OR GED / ON-THE-JOB TRAINING

Personal and Home
Care Aides
\$14.75

Home Health Aides
\$14.75

Medical Secretaries
\$18.87

Social and Human
Service Assistants
\$19.13

These jobs are in demand in Northwest Minnesota and these are Northwest Minnesota Median wages. Data collected from Department of Employment and Economic Development.

WHY CHOOSE A CAREER IN HEALTH CARE?

According to DEED's 2020 to 2030 Employment Outlook data, the Northwest Minnesota Health Care & Social Assistance sector is projected to gain another 4,500 jobs over the next decade, a 12.2% increase. Because of the steady growth in health care and social assistance, many health care-related occupations exist at every education level and are in high demand according to DEED's Occupations in Demand tool.

Northwest PIC Inc.

Rural Minnesota
CEP



CAREER PATHS IN HEALTH CARE

4-YEAR OR MORE COLLEGE DEGREE AND/OR EQUIVALENT EXPERIENCE

MEDICAL and HEALTH SERVICES MANAGERS \$46.10 Plan, direct, or coordinate medical and health services in hospitals, clinics, managed care organizations, public health agencies, or similar organizations.

PHYSICAL THERAPISTS \$39.78 Assess, plan, organize, and participate in rehabilitative programs that improve mobility, relieve pain, increase strength, and improve or correct disabling conditions resulting from disease or injury.

1-2-YEAR COLLEGE DEGREE (OR CREDENTIAL)

REGISTERED NURSES \$37.36 Assess patient health problems and needs, develop and implement nursing care plans, and maintain medical records. Administer nursing care to ill, injured, convalescent, or disabled patients. May advise patients on health maintenance and disease prevention or provide case management. Licensing or registration required.

NURSING ASSISTANTS \$18.34 Provide basic patient care under direction of nursing staff. Perform duties such as feed, bathe, dress, groom, or move patients, or change linens. May transfer or transport patients. Includes nursing care attendants, nursing aides, and nursing attendants.

LICENSED PRACTICAL & LICENSED VOCATIONAL NURSES \$23.29 Care for ill, injured, or convalescing patients or persons with disabilities in hospitals, nursing homes, clinics, private homes, group homes, and similar institutions. May work under the supervision of a registered nurse. Licensing required.

HIGH SCHOOL DIPLOMA OR GED / ON-THE-JOB TRAINING

PERSONAL AND HOME CARE AIDES \$14.75 Assist the elderly, convalescents, or persons with disabilities with daily living activities at the person's home or in a care facility. Duties performed at a place of residence may include keeping house (making beds, doing laundry, washing dishes) and preparing meals. May provide assistance at non-residential care facilities. May advise families, the elderly, convalescents, and persons with disabilities regarding such things as nutrition, cleanliness, and household activities.

HOME HEALTH AIDES \$14.75 Provide routine individualized healthcare such as changing bandages and dressing wounds, and applying topical medications to the elderly, convalescents, or persons with disabilities at the patient's home or in a care facility. Monitor or report changes in health status. May also provide personal care such as bathing, dressing, and grooming of patient.

MEDICAL SECRETARIES \$18.87 Perform secretarial duties using specific knowledge of medical terminology and hospital, clinic, or laboratory procedures. Duties may include scheduling appointments, billing patients, and compiling and recording medical charts, reports, and correspondence.

SOCIAL AND HUMAN SERVICE ASSISTANTS \$19.13 Assist in providing client services in a wide variety of fields, such as psychology, rehabilitation, or social work, including support for families. May assist clients in identifying and obtaining available benefits and social and community services. May assist social workers with developing, organizing, and conducting programs to prevent and resolve problems relevant to substance abuse, human relationships, rehabilitation, or dependent care.

In Demand Health Care Careers

NURSING ASSISTANT

REGISTERED NURSE(RN)

EDUCATION

Nursing assistants must complete a state-approved education program and pass their state's competency exam. Generally must have a high school diploma.

Bachelor of Science in Nursing(BSN), Associate's degree in Nursing (ADN) or Diploma from approved Nursing program.

IMPORTANT QUALITIES

- Active listening
- Coordination
- Monitoring
- Service orientation
- Social perception

- Critical-thinking skills
- Communication skills
- Compassion
- Detail oriented
- Emotional stability
- Organizational skills
- Physical stamina

WHAT THEY DO

Nursing assistants, sometimes called *nursing aides*, help provide basic care for patients in hospitals and residents of long-term care facilities, such as nursing homes.

Patient care, maintain medical records, educate patients and the public about various health conditions, and provide advice and emotional support.

EMPLOYMENT OPPORTUNITIES

MEDIAN ANNUAL WAGE **\$38,147**

Employment of nursing assistants is projected to grow 3.5% from 2020 to 2030.

MEDIAN ANNUAL WAGE **\$77,709**

Registered nurses are the largest healthcare occupation with over 20,000 openings expected in Minnesota over the next 10 years.

WORK ENVIRONMENT

The three largest employers of nursing assistants are nursing care facilities, hospitals (state, local, and private), and retirement communities/assisted living facilities. Nursing assistants spend much of their time on their feet, frequently lift people, and do other physically demanding tasks. Most nursing assistants work full time and may need to work evenings, weekends, and holidays.

RN's work in hospitals, physicians' offices, home healthcare services, and nursing care facilities. In close contact with people and may spend a lot of time on their feet and lifting.

Northwest PIC Inc



Equal Opportunity Employer and Program Provider - Upon request the information in this document can be made available in alternative formats for people with disabilities by contacting Michael Fisher at michaelf@rmcep.com

In Demand Health Care Careers

MEDICAL AND CLINICAL LABORATORY TECHNOLOGIST

NURSE PRACTITIONER

EDUCATION

Medical laboratory technologists typically need a bachelor's degree in medical technology or life sciences.

Nurse practitioners, also referred to as *advanced practice registered nurses (APRNs)*, must earn at least a master's degree in one of the specialty roles. APRNs must also be licensed registered nurses in their state and pass a national certification exam.

IMPORTANT QUALITIES

- Active listening
- Critical thinking
- Operation monitoring
- Reading comprehension
- Science

- Active learning
- Active listening
- Critical thinking
- Reading comprehension
- Social perceptiveness

WHAT THEY DO

Medical laboratory technologists (commonly known as *medical laboratory scientists*) collect samples and perform tests to analyze body fluids, tissue, and other substances.

Nurse practitioners coordinate patient care and may provide primary and specialty healthcare. They may work independently or in collaboration with physicians. In most states, they can prescribe medications, order medical tests, and diagnose health problems. Nurse practitioners may provide primary and preventive care and may specialize in care for certain groups of people, such as children, pregnant women or patients with mental health disorders.

EMPLOYMENT OPPORTUNITIES

MEDIAN ANNUAL WAGE \$61,182

Employment of medical laboratory technologists is projected to grow 3.8% in Northwest Minnesota from 2020 to 2030.

MEDIAN ANNUAL WAGE \$125,402

Overall employment of nurse practitioners is projected to grow 48.2% in Northwest Minnesota from 2020 to 2030, much faster than the average for all occupations. Growth will occur because of an increase in the demand for healthcare services. Several factors will contribute to this demand, including an increased emphasis on preventive care and demand for healthcare services from the aging population.

WORK ENVIRONMENT

About half of all medical laboratory technologists are employed in hospitals. Others work in doctors' offices or diagnostic laboratories.

The largest employers of nurse practitioners are offices of physicians, followed by hospitals (state, local, and private) and outpatient care centers. Nurse practitioner work can be physically and emotionally demanding as some nurse practitioners spend much of their day on their feet, often lift and move patients, and make critical decisions that affect a patient's health. Most nurse practitioners work full time.

CAREER PATHS IN BUSINESS SERVICES

SOME COLLEGE OR 1-2 YEAR COLLEGE DEGREE

Bookkeeping, Accounting & Auditing Clerk
\$18.35

Loan Officer
\$35.42

4-YEAR OR MORE COLLEGE DEGREE AND/OR EQUIVALENT EXPERIENCE

Financial Manager
\$41.61

Accountant & Auditor
\$27.49

Personal Financial Advisor
\$34.45

Human Resources Manager
\$45.83

Human Resources Specialist
\$25.33

Training & Development Specialist
\$24.24

Marketing Manager
\$50.22

HIGH SCHOOL DIPLOMA OR EQUIVALENT

Customer Service Representative
\$16.02

General Office Clerk
\$16.20

Teller
\$13.06

Receptionist & Information Clerk
\$14.05

Secretary & Administrative Assistant
\$17.01

These jobs are in demand in Northwest Minnesota and these are Northwest Minnesota Median wages. Data collected from Department of Employment and Economic Development.

WHY CHOOSE A CAREER IN BUSINESS?

- It Is a Practical Choice
- It Is Easier to Switch to a Different Job Mid-Career
- Business Careers Can Offer More Opportunities For Advancement
- Earn a Great Income
- Opportunities Exist In All Industries

Northwest PIC^{inc}



CAREER PATHS IN BUSINESS SERVICES

4-YEAR OR MORE COLLEGE DEGREE AND/OR EQUIVALENT EXPERIENCE

Financial Manager \$41.61 Plan, direct, or coordinate accounting, investing, banking, insurance, securities, and other financial activities of a branch, office, or department of an establishment.

Accountant & Auditor \$27.49 Examine, analyze, and interpret accounting records to prepare financial statements, give advice, or audit and evaluate statements prepared by others.

Personal Financial Advisor \$34.45 Advise clients on financial plans using knowledge of tax and investment strategies, securities, insurance, pension plans, and real estate. Duties include assessing clients' assets, liabilities, cash flow, insurance coverage, tax status, and financial objectives.

Human Resources Manager \$45.83 Plan, direct, or coordinate human resources activities and staff of an organization.

Human Resources Specialist \$25.33 Screen, recruit, interview, and place workers.

Training & Development Specialist \$24.24 Design and conduct training and development programs to improve individual and organizational performance.

Marketing Manager \$50.22 Plan, direct, or coordinate marketing policies and programs, and identify potential customers. Oversee product development or monitor trends that indicate the need for new products and services.

SOME COLLEGE OR 1-2 YEAR COLLEGE DEGREE

Bookkeeping, Accounting & Auditing Clerk \$18.35 Compute, classify, and record numerical data to keep financial records complete.

Loan Officer \$35.42 Evaluate, authorize, or recommend approval of commercial, real estate, or credit loans. Advise borrowers on financial status and payment methods.

HIGH SCHOOL DIPLOMA OR EQUIVALENT

Customer Service Representative \$16.02 Interact with customers to provide information in response to inquiries about products and services and to handle and resolve complaints.

General Office Clerk \$16.20 Answer telephones, bookkeeping, typing, data entry, office machine operation, and filing.

Teller \$13.06 Receive and pay out money. Keep records of money.

Receptionist & Information Clerk \$14.05 Provide information to the general public, customers, and visitors.

Secretary & Administrative Assistant \$17.01 Perform routine clerical and administrative functions such as drafting correspondence, scheduling appointments, organizing and maintaining paper and electronic files, or providing information to callers.

CAREER PATHS IN RETAIL SERVICES

4-YEAR OR MORE COLLEGE DEGREE AND/OR EQUIVALENT EXPERIENCE

General and
Operations Manager
\$32.99

Marketing Manager
\$50.22

Purchasing Manager
\$44.84

Wholesale &
Retail Buyer
\$27.71

Business Operations
Specialist
\$24.16

SOME COLLEGE OR 1-2 YEAR COLLEGE DEGREE

Sales Representative
\$23.86

HIGH SCHOOL DIPLOMA OR EQUIVALENT

First-Line Supervisor
of Retail Sales Worker
\$16.76

Merchandise Displays
and Window Trimmers
\$15.65

Protective Service
Workers
\$23.45

LESS THAN HIGH SCHOOL

Retail
Salesperson
\$12.17

Stock Clerk and
Order Filler
\$12.06

Cashier
\$10.60

These jobs are in demand in Northwest Minnesota and these are Northwest Minnesota Median wages. Data collected from Department of Employment and Economic Development.

WHY CHOOSE A CAREER IN RETAIL SERVICES?

- Flexible Scheduling
- Working With People
- Growth Opportunities
- Constant Motion
- Product Passion
- Employee Product Discounts
- Variety
- Retail is Everywhere
- Expand Customer Service, Sales & Problem Solving Skills

Northwest PIC Inc

Rural Minnesota
CEP
concentrated employment program, inc.

CAREER PATHS IN RETAIL SERVICES

4-YEAR OR MORE COLLEGE DEGREE AND/OR EQUIVALENT EXPERIENCE

General and Operations Manager \$32.99

Formulate policies, manage daily operations, and plan the use of materials and human resources.

Marketing Manager \$50.22 Plan, direct, or coordinate marketing policies and programs, and identify potential customers. Develop pricing strategies with the goal of maximizing the store's profits while ensuring the store's customers are satisfied. Oversee product development or monitor trends that indicate the need for new products and services.

Purchasing Manager \$44.84 Plan, direct, or coordinate the activities of buyers, purchasing officers, and related workers involved in purchasing materials, products, and services.

Wholesale & Retail Buyer \$27.71

Buy merchandise or commodities, for resale to consumers at the wholesale or retail level, including both durable and nondurable goods. Analyze past buying trends, sales records, price, and quality of merchandise to determine value and yield. Select, order, and authorize payment for merchandise according to contractual agreements.

Business Operations Specialist \$24.16

Pay, or arrange for payment of, taxes and duties on shipments. Prepare and process import and export documentation according to customs regulations, laws, or procedures. Clear goods through customs and to their destinations for clients. Request or compile necessary import documentation, such as customs invoices, certificates of origin, and cargo-control documents. Calculate purchase subtotals, taxes, and shipping costs for submission to customers.

SOME COLLEGE OR 1-2 YEAR COLLEGE DEGREE

Sales Representative \$23.86 Monitor the flow of products in response to changes in consumer demand. Forecast supply and demand to minimize costs and maximize availability. Contact prospective buyers or sellers of power to arrange transactions. Price products based on market conditions. Negotiate prices or contracts for sales or purchases.

HIGH SCHOOL DIPLOMA OR EQUIVALENT

First-Line Supervisor of Retail Sales Worker \$16.76

Directly supervise and coordinate activities of retail sales workers in an establishment or department. Duties may include management functions, such as purchasing, budgeting, accounting, and personnel work, in addition to supervisory duties.

Merchandise Displays and Window Trimmers \$15.65

Plan and assemble commercial displays, such as those in stores and interiors of retail stores and at trade exhibitions.

Protective Service Workers \$23.45

Monitor compliance with standard operating procedures for loss prevention, physical security, or risk management. Identify and report safety concerns to maintain a safe shopping and working environment. Apprehend shoplifters in accordance with guidelines.

LESS THAN HIGH SCHOOL

Retail Salesperson \$12.17 Sell merchandise, such as furniture, motor vehicles, appliances, or apparel to consumers.

Stock Clerk and Order Filler \$12.06 Receive, store, and issue sales floor merchandise, materials, equipment, and other items from stockroom, warehouse, or storage yard to fill shelves, racks, tables, or customers' orders.

Cashier \$10.60 Receive and disburse money in establishments. May use electronic scanners, cash registers, or related equipment. May process credit or debit card transactions and validate checks.

CAREER PATHS IN EDUCATION

DOCTORAL OR MASTER'S DEGREE

School Psychologist
\$39.12

Education Administrator-
Elementary & Secondary
\$48.21

Educational, Guidance,
School, and Vocational
Counselor
\$23.90

Speech Pathologist
\$36.13

4-YEAR COLLEGE DEGREE

Elementary School
Teacher
\$29.39

Secondary School
Teacher
\$29.37

Special Education
Teacher – Kindergarten
& Elementary
\$28.07

ASSOCIATE'S DEGREE OR CERTIFICATE

Licensed Practical and
Licensed Vocational
Nurse
\$23.29

Secretary and
Administrative Assistant,
except Legal, Medical,
and Executive
\$19.03

HIGH SCHOOL DIPLOMA OR GED AND/OR EXPERIENCE/ ON-THE-JOB TRAINING

Bus Driver, School or
Special Client
\$19.05

Cook – Institution
and Cafeteria
\$15.78

Paraprofessional /
Teaching Assistant
\$17.92

WHY CHOOSE A CAREER IN EDUCATION?

Choosing education as a career allows you to make a lasting difference in students' lives. Each day you are able to work with inquisitive young minds, inspiring and motivating them to achieve their potential. Educators can work with students at the pre-school level all the way through adult education; they can make an impact in the classroom and/or choose more of an administrative role. Is a career in Education right for you?

These jobs are in demand in Northwest Minnesota and these are Northwest Minnesota median wages. Data collected from Department of Employment and Economic Development.

Northwest PICinc

**Rural
Minnesota
CEP**
concentrated
employment
program, inc.

View videos of career paths in education:

www.careeronestop.org/Videos/CareerVideos/career-videos.aspx

Equal Opportunity Employer and Program Provider - Upon request the information in this document can be made available in alternative formats for people with disabilities by contacting Michael Fisher at michael@rmcep.com

November 2022

CAREER PATHS IN EDUCATION

DOCTORAL OR MASTER'S DEGREE

School Psychologist \$39.12

Investigate processes of learning and teaching and develop psychological principles and techniques applicable to educational problems.

Education Administrator – Elementary & Secondary \$48.21

Plan, direct or coordinate the academic, administrative or auxiliary activities of public or private elementary or secondary level schools.

Educational, Guidance, School, and Vocational Counselor \$23.90

Counsel individuals and provide group educational and vocational guidance services.

Speech-Language Pathologist \$36.13

Assess and treat persons with speech, language, voice, and fluency disorders. May select alternative communication systems and teach their use. May perform research related to speech and language problems.

4-YEAR COLLEGE DEGREE

Elementary School Teacher \$29.39 Teach students basic academic, social, and other formative skills in public or private schools at the elementary level.

Secondary School Teacher \$29.37 Teach students in one or more subjects, such as English, mathematics or social studies at the secondary level in public or private schools. May be designated according to subject matter specialty.

Special Education Teacher – Kindergarten & Elementary \$28.07 Teach elementary school subjects to educationally and physically handicapped students. Includes teachers who specialize and work with audibly and visually handicapped students as well as those who teach basic academic and life processes skills to the mentally impaired.

ASSOCIATE'S DEGREE OR CERTIFICATE

Licensed Practical and Licensed Vocational Nurse \$23.29 Care for ill, injured or convalescing patients or persons with disabilities in hospitals, nursing homes, clinics, private homes, group homes, and similar institutions. May work under the supervision of a registered nurse. Licensing required.

Secretary and Administrative Assistant, Except Legal, Medical, and Executive \$19.03 Perform clerical and administrative functions such as drafting correspondence, scheduling appointments, organizing and maintaining paper and electronic files or providing information to callers.

HIGH SCHOOL DIPLOMA OR GED AND/OR EXPERIENCE/ON-THE-JOB TRAINING

Bus Driver, School or Special Client \$19.05 Transport students or special clients, such as the elderly or persons with disabilities. Ensure adherence to safety rules. May assist passengers in boarding or exiting.

Cook – Institution and Cafeteria \$15.78 Prepare and cook large quantities of food for institutions, such as schools, hospitals or cafeterias.

Paraprofessional / Teacher Assistant \$17.92 Perform duties that are instructional in nature or deliver direct services to students or parents. Serve in a position for which a teacher has ultimate responsibility for the design and implementation of educational programs and services.

In Demand Education Careers

PARAPROFESSIONAL / TEACHER ASSISTANT

SECRETARIES AND ADMINISTRATIVE ASSISTANT

EDUCATION



Most occupations in this zone require training in vocational schools, related on-the-job experience or an associate's degree.



High school graduates can take courses in word processing and office procedures at technical schools or community colleges. Secretaries and administrative assistants typically learn their skills through short-term on-the-job training.

IMPORTANT QUALITIES



- Active listening
- Communication skills
- Instructive
- Interpersonal skills
- Patience
- Resourcefulness



- Decision-making skills
- Interpersonal skills
- Organizational skills
- Reading comprehension
- Time management
- Writing skills

WHAT THEY DO



Teacher assistants work with or under the guidance of a licensed teacher. Generally, teachers introduce new material to students while teacher assistants help reinforce the lessons by working with the individual students or small groups of students.



Secretaries and administrative assistants perform clerical and administrative duties. They prepare documents, schedule appointments, update event calendars, arrange staff meetings, maintain databases and filing systems, perform basic bookkeeping, and support other staff.

EMPLOYMENT OPPORTUNITIES

MEDIAN ANNUAL WAGE \$37,269

Employment of teacher assistants is projected to grow 8.0% percent from 2020 to 2030.

MEDIAN ANNUAL WAGE \$39,585

Employment of secretaries and administrative assistants is projected to decline 8-9% from 2020 to 2030.

WORK ENVIRONMENT



Teacher assistants typically work in public and private schools, at childcare centers, and for religious organizations. About one in three work part time and most do not work during the summer.



Although secretaries and administrative assistants work in nearly every industry, many are employed in schools, hospital, and government, legal, and medical offices. Most work full time.

Northwest PIC Inc



Equal Opportunity Employer and Program Provider - Upon request the information in this document can be made available in alternative formats for people with disabilities by contacting Michael Fisher at michaelf@rmcep.com

In Demand Education Careers

SECONDARY SCHOOL TEACHER

In Demand Education Careers

SPEECH-LANGUAGE PATHOLOGIST (SPEECH THERAPIST)

EDUCATION



Secondary teachers must have a bachelor's degree. In addition, public school teachers must have a state-issued certification or license, which may require an academic background in the subject(s) they will be certified to teach.

Speech-language pathologists typically need at least a master's degree.



IMPORTANT QUALITIES



- Active listening
- Communication skills
- Instructing
- Patience
- Resourcefulness
- Speaking

- Analytical skills
- Communication skills
- Compassion
- Critical-thinking skills
- Detail oriented
- Listening skills



WHAT THEY DO



High school teachers help prepare students for life after graduation. They teach academic lessons and various skills that students will need to pursue post-secondary education and/or enter the job market.

Speech therapists assess and treat persons with speech, language, voice, and fluency disorders. May select alternative communication systems and teach their use. May perform research related to speech and language challenges.



EMPLOYMENT OPPORTUNITIES

MEDIAN ANNUAL WAGE **\$62,802**

Employment of high school teachers is projected to grow 6-7% from 2020 to 2030.

MEDIAN ANNUAL WAGE **\$75,149**

Employment of speech therapists is projected to grow 20% from 2020 to 2030.

WORK ENVIRONMENT



Secondary teachers work in either public or private schools. They typically work during school hours, but may also work evenings and weekends to prepare lessons and grade papers. Most do not teach during the summer.

About two out of five speech-language pathologists work in schools. Most others work in healthcare facilities, such as hospitals.



COLLEGE CREDIT IN HIGH SCHOOL

In addition to meeting your high school requirements, some courses at Pillager High School (PHS) may also prepare you for continued education at college and even qualify for college credit.

- **CIS** (College in the Schools) — college-level classes taught at PHS by Pillager teachers.
- **Articulated Courses & Tech Prep Agreements** — high school classes taught at PHS that may earn college credit toward a specific program at CLC or other participating college.
- **PSEO** (Post-Secondary Enrollment Option) & **PSEO Online** — college-level classes taken at any participating college. All PSEO courses are taught by college instructors and follow the college calendar. These courses may be in person or may be taught online.

	PILLAGER HIGH SCHOOL COLLEGE CREDIT COURSES	COLLEGE CREDIT IS EARNED IN THE FOLLOWING WAYS:
College in the Schools (CIS)	Composition I Composition II Introduction to Business Accounting for Non-Accountants Introduction to Marketing Business Law College Algebra Pre-calculus Calculus I World History I World History II Introduction to Literature Science Fiction Literature Band Choir Life Science Chemistry Introduction to Education Global Studies Advanced Video Production On Course Fitness Walking	CIS courses offered through CLC requires: 10 th graders to have a cumulative GPA of 3.0 or higher and rank in the 90 th percentile or higher on a nationally normed standardized test or be in the top 10% of their class. 11 th graders to have a cumulative GPA of 3.0 or higher 12 th graders to have a cumulative GPA of 2.5 or higher
Articulated Courses & Tech Prep Agreements	Desktop Publishing Digital Photography Intro to Computers Online ProStart (Culinary I & II) Intro to Business Accounting I	Students enrolling at Central Lakes College may receive college credit for the following courses: GDES 1144 Adobe InDesign GDES 1140 Adobe PhotoShop COMP1101 Computer Fundamentals ServSafe Certification BUSN 1501 Intro to Business BUSN 1102 Accounting for Non-Accountants
Post-Secondary Enrollment Options/Online	Minnesota's PSEO program allows qualified sophomores, juniors, and seniors to take college coursework on Minnesota college campuses or online.	State eligibility guidelines are as follows: Sophomores: Cumulative GPA of 3.0 or higher and must "meet" or "exceed" on the MCA. Juniors: Cumulative GPA of 3.0 or higher Seniors: Cumulative GPA of 2.5 or higher Qualifying scores on ACT or placement test, and/or cumulative GPA for college-level reading and math placement. Note: Enrollment standards vary at different colleges. Some are more rigorous than others. Per state statute, students must notify the school district by May 30th if they plan to take PSEO.

College in the Schools (CIS)



Pillager High School offers college-level courses in English, social, science, mathematics, and business through Central Lakes Community College (CLC). Students must meet CLC's criteria to enroll in college courses. These criteria have been established to help ensure that students have the experience and the ability to succeed in these challenging courses.

Students who wish to take CIS courses through CLC must meet the following minimum requirements: 3.0 cumulative GPA as a sophomore and rank in the 90th percentile or higher on a nationally normed standardized test or be in the top 10% of their class, 3.0 cumulative GPA as a junior, 2.5 cumulative GPA as a senior, and must meet the cut score on the Accuplacer (college placement exam) in reading and math or meet the minimum cumulative GPA standard for college-level reading (2.6+) and college-level math (2.8+, requires Algebra II or equivalent with a C- or higher). MCA and ACT scores can also be used to determine college-level placement.

Students who enroll in college courses can expect to work at a college-level pace and cover more complex material in greater depth than in the standard high school courses. Please be mindful that expectations in these classes are high. Grades earned by students in these classes become part of their permanent college academic record.

Students who qualify to take these classes must be able to organize and manage their time, balance homework with extra-curricular activities and work, and initiate communication regularly with their teachers concerning make-up work. Because this is a college course, there will be higher expectations in academics and accountability for students that supersede rules and expectations listed in the high school student handbook.

Another responsibility for students in a college-level course is self-advocacy. It is important that the student address any concerns related to grades or performance with their classroom teacher as issues arise. Please carefully consider this before registering for these classes. Students who register for college-level courses but do not meet the criteria will be placed in regular high school courses.

Post-Secondary Enrollment Options (PSEO)

Post-Secondary Enrollment Options (PSEO) allows high school sophomores, juniors, and seniors to take courses, full- or part-time, at a post-secondary institution for high school and college credit. It is the student's responsibility to apply, register, and obtain textbooks/materials independently to the college they are planning on attending as a PSEO student.

Students who wish to take PSEO courses through Central Lakes College must meet the following requirements: 3.0 cumulative GPA as a sophomore and must "meet" or "exceed" on the MCA, 3.0 cumulative GPA as a junior, 2.5 GPA as a senior, and must meet the cut score on the Accuplacer (college placement exam) in reading and math or meet the minimum cumulative GPA standard for college-level reading (2.6+) and college-level math (2.8+, requires Algebra II or equivalent with a C- or higher). MCA and ACT scores can also be used to determine college-level placement.

Sophomore students may take advantage of PSEO by enrolling in an approved CTE course through Central Lakes College for their first semester. If the student successfully completes their CTE course with a "C" or better the student can then register for more PSEO courses for their second semester and are not limited to only CTE courses. Students must have attained a passing score or met the 8th grade standard on the 8th grade MCA in reading and meet other course prerequisites or course enrollment standards established by Central Lakes College. If the MCA was not taken in 8th grade, students can use their 7th grade MCA scores. These standards include, but are not limited to assessment, test scores, program admission or other requirements.

The PSEO program was designed to provide students with a greater variety of class offerings and the opportunity to pursue more challenging coursework than may be available at the high school. The tuition, fees, and required textbooks are at no cost to the student. Please be mindful, expectations in these classes are high. Grades earned by students in these classes become part of their permanent college academic record.

Due to the FERPA (Family Educational Rights & Privacy Act) Pillager school district, as well as parents and/or guardians are not able to access student records and grades, or communicate with instructors unless the PSEO student signs a waiver, even if they are under the age of 18. Please carefully consider this before registering for these classes. For more information on the PSEO program, please visit the high school counselor website at www.isd116.org.

PSEO Online College Courses

Students also have the ability to register for online college courses offered through Central Lakes College. Students who wish to take online courses through Central Lakes College must meet the following requirements: 3.0 cumulative GPA as a sophomore and must “meet” or “exceed” on the MCA, 3.0 cumulative GPA as a junior, 2.5 GPA as a senior, and must meet the cut score on the Accuplacer (college placement exam) in reading and math or meet the minimum cumulative GPA standard for college-level reading (2.6+) and college-level math (2.8+). MCA and ACT scores can also be used to determine college-level placement. It is the student’s responsibility to apply, register, and obtain textbooks/materials independently to the college they are planning on attending as a PSEO student.

Online college courses provide students with a greater variety of class offerings and the opportunity to pursue more challenging coursework than may be available at the high school. The tuition, fees, and required textbooks are at no cost to the student. Please be mindful, expectations in these classes are high. Grades earned by students in these classes become part of their permanent college academic record. Students who qualify to take these classes must be able to organize and manage their time. This is of particular importance since the class is not held in a traditional format. It is the student’s responsibility to make sure they log in daily and complete the necessary work.

FERPA law applies to online courses as well. For more information on online learning please see Mrs. Turner.

Per state statute, students must notify the school district by May 30th if they plan to take PSEO courses.

NCAA ELIGIBILITY INFORMATION

NCAA Eligibility for student athletes is strict and has a list of rules that must be followed in order to be eligible. If you are planning to enroll in college as a first-year student and you wish to participate in NCAA Division I, Division II, or Division III athletics, you must be certified by the NCAA Initial-Eligibility Clearinghouse. The Clearinghouse ensures consistent application of NCAA initial – eligibility requirements for all prospective student athletes at all member institutions. Requirements for eligibility are very specific and rigid. **It is the responsibility of all prospective NCAA Division I, Division II, and Division III student athletes at Pillager High School to familiarize themselves with these requirements and to apply to the Clearinghouse.**

Students may access information on eligibility by going to the NCAA Eligibility Center at <http://www.ncaa.org/student-athletes/future>.

Students may also download the current Guide for the College-Bound Student-Athlete by visiting the NCAA Eligibility website. PHS courses that are NCAA approved will be denoted by the NCAA logo.



Pillager Huskies Career Academies

(Formerly known as Bridges Career Academies)



If you are undecided about a career pathway, enrolling in a **Pillager Huskies Career Academy** is an easy way to participate in some elective classes while exploring a career field. Pillager Huskies Career Academies were designed to provide a snapshot into a specific industry, while including fundamental skills and work experiences to help you better understand what a career in that field will be like. Students that complete the academy standards receive a certificate of completion from the Pillager Huskies Career Academies, as well as an honor cord upon graduation. Documented and approved work experience hours in the academy specific field can replace one course.

ACADEMY	COURSES	ACADEMY COMPLETION STANDARD
Graphic Arts Career Academy	Digital Photography Desktop Publishing Webpage Design Graphic Design	Complete three out of the four courses and earn a “B” or better in each course.
Hospitality Management Career Academy	Hospitality and Tourism Accounting I Introduction to Business Entrepreneurship Pro Start Culinary I Pro Start Culinary II	Complete Accounting I and Intro to Business or Entrepreneurship plus two other courses and earn a “B” or better in each course.
Natural Resources Career Academy	Natural Resources I Natural Resources II Environmental Biology Aquatic Biology Intro to Agriculture	Complete three of the five courses and earn a “B” or better in each course.
Introduction to Landscape and Natural Design Career Academy	Natural Resources II Greenhouse Management Intro to Landscaping Digital Photography	Complete three of the four courses and earn a “B” or better in each course.
Building Trades	Construction Trades Welding Trades Math Cabinet & Furniture Making	Complete three out of the four courses and earn a “B” or better in each course.
Business	Accounting I Intro to Business Hospitality & Tourism Intro to Computers Entrepreneurship Greenhouse Management	Complete Accounting I or Intro to Business and choose two other courses and earn a “B” or better in each course.
Applied Chemistry	Environmental Biology Chemistry I Life Science Chemistry Forensic Science I	Complete three of the four courses while earning a “B” or better in each course.
Pre-Health	Forensic Science Food Chemistry Chemistry I Life Science Chemistry	Complete three of the four courses while earning a “B” or better in each course.

ASSESSMENTS & TESTING

OPTIONAL EXAMS

Pre-ACT Test

The Pre-ACT test gives students the opportunity to practice for the ACT test with a shortened version of the test. It provides scores on the ACT on the 1-36 scale, as well as a full view of students' college and career readiness by identifying areas of strength and areas that need improvement. Information from the Pre-ACT will be used by the students to work within the ACT Academy, an online learning tool that allows students to take periodic quizzes, track scores, and receive targeted practice in areas of deficiency.

PSAT Test

All juniors are eligible to take the PSAT exam (Preliminary SAT). The exam is held in October on the nationally designated test date. Students must pay for this exam. This is the only exam that can qualify you for the National Merit Scholarship Program. Students who are planning on attending a four-year college right out of high school are encouraged to take the exam. Parents and students will receive more information about the PSAT via email in the fall.

ACT Test

Any junior who plans on attending a four-year college right out of high school can sign up to take the ACT on the designated test date set by the state of MN. When taken through the school district, the exam is free of charge. Seniors who did not choose to test as juniors are eligible to take the ACT as seniors. Parents and students will receive an informational letter and deadline for sign up via email in the spring.

ASVAB Test

Any junior who does not take the ACT is eligible to take the ASVAB test through the United States Military. This test combines student interests with their ability and provides information on career pathways. It is highly recommended that juniors who have not taken the ACT take the ASVAB. The ASVAB is typically given in the month of December. As the date approaches parents and students will be emailed an informational letter.

NCRC (National Career Readiness Certificate)

Juniors and seniors have the option of taking the NCRC through Rural MN CEP. The NCRC The ACT WorkKeys National Career Readiness Certificate (ACT WorkKeys NCRC®) is an assessment-based credential issued at four levels. The NCRC measures and certifies the essential work skills needed for success in jobs across industries and occupations. The NCRC is an optional exam for those students interested in taking it.

REQUIRED EXAMS

MN MCA Testing

The Minnesota Comprehensive Assessments (MCA) are state tests in reading, math, and science that are used to meet federal and state legislative requirements. The tests are administered every year to measure student performance relative to the MN Academic Standards that specify what students in a particular grade should know and be able to do. All students in public schools are required to participate in the statewide assessment program.

Grade 10: Reading & Science MCAs

Grade 11: Math MCA

Pillager High School

Course Descriptions for 2023-2024



Courses with college credit opportunity (CIS) are identified by the Central Lakes College logo.



Courses that are part of a Pillager Huskies Career Academy (earn a certificate & cord at graduation) are identified with the husky logo.



Courses that are NCAA approved are denoted by the NCAA logo.

CTE

Courses that are considered Career & Technical Education

Fine Arts

Courses that are considered a Fine Arts

AGRICULTURE



FOOD CHEMISTRY CTE

Grades 9-12, 1 PHS credit, semester course

Prerequisite: None

It's chemistry, but edible! Find out how to cook and bake recipes from pancakes to pies, and make things from cheese to marshmallows, all while learning the science behind it all. Besides trying out a wide variety of recipes, you'll also conduct taste tests and develop your own food product with a team. What could be tastier?



ANIMAL SCIENCE CTE

Grades 9-12, 1PHS credit, semester course

Prerequisite: None

From cats and dogs to cows and pigs, this course covers it all! Learn about what makes animals tick, from the skeletal system to genetics. Do you want to take good care of your animals? You will gain practical knowledge like animal nutrition, housing, and checking vital signs.

GREENHOUSE MANAGEMENT CTE

Grades 9-12, 1 PHS credit, semester course

Prerequisite: None

Whether you want to work in landscaping or nurseries, or just are interested in a backyard garden, this is the right place for you! Learn what it takes to grow healthy, productive plants, create the perfect environment in a greenhouse, and help run the annual plant sale for Arbor Day!



INTRO TO AGRICULTURE CTE

Grades 9-12, 1 PHS credit, semester course

Prerequisite: None

From hunting and gathering to plant genetics, this course covers a sampling of agricultural topics like plants, animals, soil science, and natural resources. Gain a perspective of agricultural systems around the world and how far we've come since the beginning of agriculture.



VETERINARY TECHNOLOGY CTE

Grades 9-12, 1 PHS credit, semester course

Prerequisite: Animal Science or instructor approval

Whether you're interested in becoming a vet or a vet tech, nursing, or just knowing what your vet is talking about, this course will serve you well! Learn medical terminology, anatomy, and dissection, all with an in-depth look at common animal diseases and treatments.

INTRO TO LANDSCAPING Fine Arts

Grades 9-12, 1 PHS credit, semester course

Prerequisite: None

If you like artistic design, plants, and working outside, you'll fit right in with this course! After learning the basics of landscaping, you and your classmate will design a landscape based on the wants and needs of the users, select plants, shrubs, and trees appropriate for the area, and install your design on school grounds for all to see and enjoy!



ART

DRAWING Fine Arts

Grades 9-12, 1PHS credit, semester course

Prerequisite: None

Students will be introduced to various drawing and shading techniques using different materials such as pencil, charcoal, pen and ink, and watercolor. Students will explore units such as contour line, observational drawing, perspective drawing, still life, grid drawing, and colored pencil.

STUDIO ART Fine Arts

This course alternates every other year with Graphic Design

Grades 9-12, 1 PHS credit, semester course

Prerequisite: None

In this class, students will explore a variety of both two-dimensional and three-dimensional art mediums while also learning how to build a personal portfolio of artwork. The elements and principles of art will be heavily emphasized throughout this course as well as the studio habits of mind.



PAINTING Fine Arts

Grades 9-12, 1 PHS credit, semester course

Prerequisite: None

Students will be introduced to color theory, painting styles, techniques, and composition. Some of the mediums students will explore include: acrylic, tempera, and watercolor. Students will explore units such as color mixing, landscape painting, still life, watercolor, portrait, and more.

CLAY & SCULPTURE Fine Arts

Grades 9-12, 1 PHS credit, semester course

Prerequisite: None

Students who take clay and sculpture will get to experience a wide variety of three-dimensional art projects including: clay coil vessels, slab-built clay projects, abstract sculpture, papier-mache, plaster, and found objects. Students will also have the opportunity to practice throwing clay on a pottery wheel.



GRAPHIC DESIGN Fine Arts

Grades 9-12, 1 PHS credit, semester course

Prerequisite: None

Graphic Design is a course that will help students learn the basics of the design process as well as using the digital workspace. This class includes the history of graphic design, page layout, packaging design, typography, and logo creation. Projects will be created through an online website 'Photopea' similar to Adobe Photoshop.



BUSINESS & COMPUTERS

ACCOUNTING FOR NON-ACCOUNTANTS CTE

Grades 10-12, 1 PHS credit, semester course, 3 CLC credits

Prerequisite: 3.0 cumulative GPA as a sophomore and rank in the 90th percentile or higher on a nationally normed standardized test or be in the top 10% of their class, 3.0 cumulative GPA as a junior, 2.5 cumulative GPA as a senior

This class teaches all students, not just accounting majors, an excellent understanding of how a business works and the “language” of business. Students learn the basic accounting cycle for a service business organized as a proprietorship and a merchandising business organized as a corporation. These accounting procedures prepare students for employment in business related occupations and for maintaining personal financial records. This course may be taught either as an in person course or in an online asynchronous format.



YEARBOOK CTE

Grades 9-12, 1 PHS credit, semester course

Prerequisite: None

Students will learn and use Adobe Photoshop CS6 and the yearbook software to create and produce the school yearbook. Marketing the book, fundraising skills, and finances will also be part of the course.



DESKTOP PUBLISHING CTE

Grades 9-12, 1 PHS credit, semester course, 3 CLC credits

Prerequisite: None

Students will use InDesign, Photo Shop, and Publisher to create and produce a variety of forms including flyers, brochures, advertisements, placemats, certificates, and business forms. Students will learn principles of design and document layout. The Tech Prep Agreement with Central Lakes College (CLC) may also allow students to earn a college credit as GDES 1144 for Adobe InDesign.





DIGITAL PHOTOGRAPHY Fine Arts

Grades 9-12, 1 PHS credit,
semester course, 3 CLC credits

Prerequisite: None

CLC CENTRAL
LAKES COLLEGE



This course will incorporate the use of digital cameras and Photoshop CS6. Topics will include file formats, storage, downloading images, printing images, editing images, and photo tips. Students will learn about the fundamentals of digital photography, composition, presentation, history of photography, purchasing a camera, and ethics when manipulating photos. This class counts as a fine arts credit. The Tech Prep Agreement with Central Lakes College (CLC) may also allow students to earn a college credit as GDES 1140 for Adobe Photoshop. This course may be taught either as an in person course or in an online asynchronous format.

HOSPITALITY & TOURISM CTE

Grades 10-12, 1 PHS credit, semester course

Prerequisite: None

Guest retention, communication, and relations are a 'must' in any type of work setting. Area resorts have provided much of the curriculum for this course. Students will work on these areas and utilize their skills during a resort internship.



INTRODUCTION TO BUSINESS CTE

Grades 10-12, 1 PHS credit, 3 CLC credits, semester course

Prerequisite: 3.0 cumulative GPA as a sophomore and rank in the 90th percentile higher on a nationally normed standardized test or be in the top 10% of their class, 3.0 cumulative GPA as a junior, 2.5 cumulative GPA as a senior

CLC CENTRAL
LAKES COLLEGE



Topics will include an overview of U.S. Business & Economy, types of business organizations, small business and entrepreneurship, marketing, management functions, motivating employees, human resources, financial systems, and business ethics. All students will create a business plan.

INTRODUCTION TO COMPUTERS I & II CTE

Grades 10-12, 1 PHS credit, semester course, 3 CLC credits

Prerequisite: Keyboarding experience. Students must take Intro to Computers Online I before they can take Intro to Computers II.

CLC CENTRAL
LAKES COLLEGE

Students will learn basic computer knowledge. Topics include an Introduction to Computers, Internet, Application Software, Components of the System Unit, Input, Output, and Storage. Projects using word processing, spreadsheets, and slide shows will be required. This course may be offered as an asynchronous online course. Students must be able to work independently and efficiently. The Tech Prep Agreement with Central Lakes College (CLC) may also allow students to earn college credit as COMP 1101 for Computer Fundamentals.

WORK & WRITING SEMINAR

Grades 10-12, 1 PHS credit, semester course

Prerequisite: None

This course prepares students for successful completion of their work experiences and for the world of work. Students will learn soft skills, such as leadership, teamwork, communication, problem solving, work ethic, flexibility/adaptability, and interpersonal skills. Students will learn how to create résumés and cover letters. They will also practice interview skills to help them gain successful employment. This course can count towards an English elective credit. This course may also be offered in either an online asynchronous format or as an in person course.

BUSINESS LAW CTE

Grades 10-12, 1 PHS credit, 3 CLC credits, semester course

Prerequisite: 3.0 cumulative GPA as a sophomore and rank in the 90th percentile or higher on a nationally normed standardized test or be in the top 10% of their class, 3.0 cumulative GPA as a junior, 2.5 cumulative GPA as a senior

This course is a study of the political and legal framework within which American businesses operate. Topics include the nature and formation of law and its application to business, constitutional, administrative, criminal, and international laws, contracts, torts, product liability, cyber law, bankruptcy, consumer protection, environment, real property, business organization, and employee relations.



WORK EXPERIENCE CTE

Grades 11-12, 1 PHS credit, semester course

Prerequisite: Work & Writing Seminar

This course of supervised employment is designed to assist students to acquire desirable work habits, attitudes, and skills to enable them to become productive employees. This course also provides students with career awareness for jobs. Students are required to secure their job. Other topic areas include safety, keeping a job, benefits, salary, and work portfolios.

WEBPAGE DESIGN CTE

Grades 9-12, 1 PHS credit, semester course

Prerequisite: None

Webpage design will be addressed using HTML and Web GUI. PowerPoint, Publisher, Photoshop, and other graphic software will be utilized in this course. Units will include HTML, web site structure, Intro to CSS, layout and format, hyperlinks, table, and lists. Students will research career opportunities related to web site design and ethical issues relating to internet use.



VIDEO PRODUCTION I & II CTE

Grades 9-12, 1 PHS credit, semester course, 3 CLC credits

Prerequisite: Must have successfully completed Video Production I before taking Video Production II. To earn college credit students must have a 3.0 cumulative GPA as a sophomore and rank in the 90th percentile or higher on a nationally normed standardized test or be in the top 10% of their class, 3.0 cumulative GPA as a junior, 2.5 cumulative GPA as a senior

In this course, students will be introduced to video production and the skills and techniques needed to successfully complete a variety of video projects. Students will learn what a video camera is and how it works, various stabilization techniques, lighting principles, audio principles and basic graphic design. Students will produce projects both recorded and live. Students will learn and use a variety of computer software solutions for video editing as well as writing and graphic design.



COLLEGE & CAREER READINES



ONCOURSE CTE

Grades 10-12, 1 PHS credit, semester course, 3 CLC credits

Prerequisite: 3.0 cumulative GPA as a sophomore and rank in the 90th percentile or higher on a nationally normed standardized test or be in the top 10% of their class, 3.0 cumulative GPA as a junior, 2.5 cumulative GPA as a senior

This course is designed to promote student and lifelong success. Course content generally includes academic skills, life management skills, and information about school and community. Specific topics include: goal setting, learning styles, college readiness strategies, study techniques,



time management, test-taking skills, memory techniques, stress reduction, critical thinking applications, communication tips, assertiveness, relationship building, cultural diversity awareness, health and wellness issues, college and community resources, financial planning and the many personal issues that may affect college students. This course is required for students earning their AA degree.



INTRO TO EDUCATION

Grades 11-12, 1 PHS credit, 3 St. Cloud State credits, semester course



Prerequisite: Juniors must have a cumulative GPA of 3.0 or above, seniors must have a cumulative GPA of 2.5 or above or teacher/school recommendation. Students must apply and be accepted to St. Cloud State University.

This course addresses a wide variety of topics and experiences to help you delve into the professional world of teaching. In this online concurrent enrollment class, students will reflect on the history and the field of education and examine pressing issues on today's public schools, particularly issues of equity and social justice. You will learn about what makes an effective teacher and how to develop and implement a great lesson. There will be an opportunity to work in a classroom, experiencing what it's like to be a teacher today.

This course is taught online with a cohort synchronous session every two weeks. Students must have one full hour in their schedules for this class, tentatively their first hour. In addition, students must have this time (or other unscheduled time during the school day) available for their field experience. Other students from different school districts will also be enrolling in this class. This is a great opportunity to virtually meet other students who also have an interest in a career in education!

ENGLISH



COMPOSITION I

Grades 11-12, 2 PHS credits, semester course, 4 CLC credits



Prerequisite: Must have successfully completed English 9 and English 10 with a C or better and must have an overall GPA of a 3.0 or higher as a junior or a 2.5 as a senior. Must meet the cut score on the Accuplacer (college placement exam) in reading or meet the minimum cumulative GPA standard for college-level reading (2.6+). MCA and ACT scores can also be used to determine college-level placement. This course can take the place of World Lit & Composition.

This is a first semester college-level composition course focusing on a variety of writing styles and formats using technology as a tool for composing. Emphasis is placed on writing as a process, outlines, style, developing a voice, and MLA format. Presupposes competency in standard English.

COMPOSITION II

Grades 11-12, 2 PHS credits, semester course, 4 CLC credits



Prerequisite: Must have completed College Composition I with a C or better, and must have an overall GPA of a 3.0 or higher as a junior or as a 2.5 as a senior. Must meet the cut score on the Accuplacer (college placement exam) in reading or meet the minimum cumulative GPA standard for college-level reading (2.6+). MCA and ACT scores can also be used to determine college-level placement. This course can take the place of World Lit & Composition.

This is a second semester college-level composition course focusing on academic writing using primary and secondary sources from online databases and print resources. Emphasis is placed on the writing process for research, summarizing research, logical argumentation, and APA format. Presupposes competency in standard English.

INTRODUCTION TO LANGUAGE ARTS

Grade 9, 2 PHS credits, year-long course

Prerequisite: None. Required for all freshmen.

This is an introduction to language course, stressing composition and comprehension. Students will be introduced to a variety of texts, in addition to stressing paragraph writing and writing strategies. Furthermore, grammar and vocabulary will be a focal point.



U.S. LITERATURE AND COMPOSITION

Grade 10, 2 PHS credits, year-long course

Prerequisite: Must have successfully completed English 9. Required for all sophomores.

This class coordinates with the U.S. History class to provide interdisciplinary humanities instruction. Students will read and study literature that aligns with various eras in U.S. history while learning writing skills related to the three Minnesota writing standards in narrative, expository, and persuasive writing.



WORLD LIT & COMPOSITION

Grade 11, 2 PHS credits, year-long course

Prerequisite: Must have successfully completed English 9 and English 10.

Required course for all juniors.

This course is designed to further student's knowledge of writing styles, communication, and great literary works related to major events in world history. Preparation for the ACT will also take place.



INTRODUCTION TO LITERATURE

Grades 11-12, 1 PHS credit, semester course

Prerequisite: Students wishing to take this course for college credit must have an overall GPA of a 3.0 or higher as a junior or as a 2.5 as a senior. Must have successfully completed Composition I & II with a C or higher.

Introduction to literature is a survey course of great, creative literature, specifically prose, drama, and poetry. In addition to developing personal responses to the selected works in the course, students will become adept at discussing and analyzing literature and will develop fluency in literary concepts (plot, point of view, characterization, setting, symbolism, theme, tone, figurative language, stream-of-consciousness, Realism, et. al.). For students wishing to continue study in poetry, drama, American, or world literature, this course is a necessary starting point. Students who wish to expand their reading experience, develop a deeper appreciation for creative literature, and learn techniques for literary interpretation will also benefit greatly from this course.



SCIENCE FICTION & FANTASY LITERATURE

Grades 11-12, 1 PHS credit, semester course

Prerequisite: Students wishing to take this course for college credit must have an overall GPA of a 3.0 or higher as a junior or as a 2.5 as a senior. Must have successfully completed Composition I & II with a C or higher.

This course is a study of selected works of science fiction and fantasy literature. Focus will be on critical reading and the analysis of the literature. In addition, this course will address issues of historical and contemporary importance such as environmentalism, politics, religion, ethics, technology, individuality and conformity, and economics. By examining these issues through the lens of science fiction and fantasy literature, students will gain an alternative perspective on world history and how these issues affect their individual lives and the culture in which they live.



THEATRE ARTS I Fine Arts

Grades 9-12, 1 PHS credit, semester course

Prerequisite: None

Students will be introduced to the basic concepts of theatre arts. This course is designed to accommodate students who have no experience or may have previously been involved in theatre. Students will use various creative drama techniques to build confidence and trust, stimulate imagination, movement, and role-play. Through theatre games and activities, students will learn to lose inhibitions and will gain trust in themselves as well as others in their group. This class will also introduce students to the various arts that create a complete theatrical production: acting, sets, costumes, lights, sound, make-up etc. Classroom requirements include participation on stage and behind stage in productions during school hours and possibly after school hours. Students will exhibit and reinforce their skills through individual and group presentations, performances, movement and voice, character building, and script and journal writing.

INDEPENDENT NOVELS I & II

Grades 9-12, 1 PHS credit, semester course

Prerequisite: None. If you are registering for Independent Novels II you must have successfully completed Independent Novels I with a C or better.

This semester-long online course is an independent study, asynchronous class that allows students to develop a deeper understanding of the literary genre of the novel. The first concepts to be covered shall be characteristics of and historical development of the novel. Next, students will gain knowledge and exposure to various novel sub-genres, including: young adult novels, realistic fiction/bildungsroman fiction, historical fiction, mystery/thriller fiction, and science fiction and fantasy.

Students registering for Independent Novels II will develop a deeper understanding of the literary genre of the novel and use the skills and strategies learned in Independent Novels I. Students will be reading texts that are labeled in the literary canon as classics or books that can be described as college level texts. Topics to cover may include: Early American Literature, British Literature, Historical Fiction, Contemporary Literature, Choice on "Classic," Research on a Historical Novel, and the Forgotten Novel.

CREATIVE WRITING

Grades 9-12, 1 PHS credit, semester course

Prerequisite: None

This semester-long online course is an independent study, asynchronous class that allows for creative written expression. This course is designed to stimulate creativity in thought and perception and to enhance each student's abilities to express his or her personal vision in written form. Students will be introduced to the basic language, concepts, and structures of fiction, poetry, and journal writing.



FAMILY & CONSUMER SCIENCE

FUNDAMENTALS OF FOOD PREPARATION I CTE

Grades 9-12, 1 PHS credit, semester course

Prerequisite: None

Fundamentals of Food Preparation is an introductory course valuable for all students where they will study methods of food preparation, meal planning, and basic nutrition. This is a nutrition class that introduces students to only the basics of food preparation so they can become self-sufficient in accessing healthy and nutritious foods. Students will plan and prepare a variety of foods to gain an understanding of the reasons behind the preparation methods and techniques. Students will also learn the basics of proper measuring techniques, equipment handling, reading food labels, recipe reading, preparation techniques, planning healthy menus, healthy fast-food options and fat and sugar substitutes. The course will provide students with exposure to a variety of foods using the USDA “My Plate Plan.” Prior to lab experiences, students will participate in instruction covering safe food handling and kitchen safety. Major course topics include nutrition principles and applications; influences on nutrition and wellness; food preparation, safety, and sanitation; and science, technology, and careers in nutrition and wellness. This is a hands-on course that will provide opportunities to prepare and taste foods in addition to developing skills in teamwork, cooperation, communication, and negotiation. Fundamentals of Food Preparation is recommended for all students regardless of their career cluster or pathway, in order to build basic culinary arts and hospitality knowledge and skills.

Breakfast, and Chocolate Covered Strawberry Fundraiser.



PROSTART I CTE

Grades 9-12, 1 PHS credit, semester course

Prerequisite: It is highly recommended that students take Fundamentals of Food Preparation first.



This course uses the Prostart Curriculum, designed by the National Restaurant Association for students who are interested in going into the restaurant or hospitality fields. This course is designed to introduce students to the culinary arts industry and restaurant management. Students will learn the skills and knowledge they need for success in the foodservice industry, such as: food safety and sanitation, knife skills, and operating basic and specialized kitchen equipment. Units of study will be making stocks, soups and sauces, methods of cooking, flavoring with herbs and spices, plating techniques and more. Students will also learn basic management skills throughout the course. This is a hands-on course that will provide opportunities to prepare and taste foods in addition to developing skills in teamwork, cooperation, communication, and negotiation. Students will work closely with a mentor chef from a local food service establishment throughout the course. ServSafe Food Handler’s Certification is available for those wishing to test. Activities that require mandatory participation include Pillager Education Foundation Dinner, ProStart Competition, Chili Bowls for the Arts, Superintendent Regional Breakfast, and Chocolate Covered Strawberry Fundraiser.



PROSTART II-IV CTE

Grades 9-12, 1 PHS credit, semester course

Prerequisite: Fundamentals of Food Preparation and ProStart I



This course is a continuation of ProStart I and uses the Prostart Curriculum, designed by the National Restaurant Association, to prepare students for careers in the restaurant and hospitality fields. Students will learn basic restaurant management skills, safe food handling procedures, and knife skills. Students will also learn culinary skills such as eggs and dairy, breakfast cookery, potatoes and grains, cooking methods for meats and poultry, artisan breads, advanced baking including cakes, specialty desserts and more. Students will work closely with a mentor chef from a local food service establishment throughout the course. This is a hands-on course that will provide opportunities to prepare and taste foods in addition to developing skills in teamwork, cooperation, communication, and negotiation. At the end of the course, students may take the National Restaurant Association ProStart final exam to earn a Certificate of Achievement. Activities that require

mandatory participation include Pillager Education Foundation Dinner/ Planning and Preparing, ProStart Competition, Chili Bowls for the Arts, Superintendent Regional Breakfast, and Chocolate Covered Strawberry Fundraiser.

CHILD AND HUMAN DEVELOPMENT CTE

Grades 9-12, 1 PHS credit, semester course

Prerequisite: None

Child and Human Development is an introductory course in human development from conception/prenatal through the lifespan and will be studied through readings, lectures, child observations and interaction with children. This course places emphasis on valuing children and our role as the “developers of children.” Topics include conception, prenatal development, the mother’s health and well-being during pregnancy, nutritional needs of the mother and child, childbirth, and children’s issues such as health standards, safety concerns, and abuse and neglect. Emphasis is on childcare through nurturing and the support systems for parents and caregivers.



Understanding child development is essential for students interested in careers that involve working with children and social services, as well as to all prospective parents. Special conditions affecting children, issues in the profession and ethics in child development will also be addressed. It is especially relevant for students interested in careers that draw on knowledge of children, child development, and nurturing of children. The focus of this class is practical preparation for the responsibilities of parenthood and/or a career involving children.

Finally, students will engage in the “Real Care Babies” project where students will participate in a baby simulation over a period of a few days. This course features the Pillager Early Childhood Center where students get hands-on experience teaching and guiding toddlers.



EARLY CHILDHOOD EDUCATION CTE

Grades 9-12, 1 PHS credit, semester course

Prerequisite: Childhood and Human Development

Early Childhood Education prepares students for employment in early childhood education and related careers that involve working with children by providing the foundations for study in higher education that leads to early childhood education and other child-related careers. This course begins where Child and Human Development leaves off, with a focus on the study of children from birth through the age eight. It encompasses the physical, emotional, social, and mental growth during that important first year. Special topics that will be covered include infant care, toddler development, discipline, diet, and safety. In addition, students will have work experience observing and interacting within the preschool or elementary classroom.

INTERIOR DESIGN CTE

Grade 9-12, 1 PHS credit, semester course

Prerequisite: None

Explore the field of Housing and Interior Design and learn how to use space, color and design to create beautiful environments. This course addresses the selection and planning of designed spaces to meet the needs, wants, values and lifestyles of individuals, families, clients, and communities. Housing decisions, resources and options will be explored including factors affecting housing choices and the types of housing available. Design and space planning involves evaluating floor plans and reading construction documents while learning to create safe, functional, and aesthetic spaces. This course will cover housing and furniture styles, principles and elements of design, floor plans, backgrounds, lighting, flooring and home accessories. Have fun, be creative and find out if this is a career option for you. Through the use of computerized design programs and traditional design techniques, you will have the ability to plan and decorate your own rooms and enjoy your creative side.



INTERNATIONAL FOODS CTE

Grade 9-12, 1 credit, semester course

Prerequisite: It is highly recommended that students take Fundamentals of Food Preparation before they take this course.

In International Foods you will get a first-hand opportunity to learn about foods that come from other parts of the world. We will look at foods from U.S. regions, Latin America, Europe, Mediterranean countries, Africa, and Asia. International Foods concentrates on traditional food preparation with plenty of “hand-on” opportunities. We will study topics surrounding the issues facing the world food supply including hunger, local food resources, how foods are processed and prepared (including GMO and Non-GMO foods), methods for preserving and making food sustainable, and foods related to specific culture or religion. This course is a must for students seeking careers in the hospitality industry or fields of nutrition, food and wellness. Students can explore the food industry and examine their own personal and career goals. This is a hands-on course that will provide opportunities to prepare and taste foods from around the world in addition to developing skills in teamwork, cooperation, communication, and negotiation.

INDUSTRIAL TECHNOLOGY

CABINET MAKING & FURNITURE CTE

Grades 9-12, 1 PHS credit, semester course

Prerequisite: There is a materials fee. The fee varies depending upon the type of project the student chooses to create.

Students have the opportunity to work hands-on with wood and woodworking tools. Students have the opportunity to construct cabinets and other wood products. A fee is associated with this course to cover the costs of materials.



CONSTRUCTION TRADES CTE

Grades 10-12, 1 PHS credit, semester course

Prerequisite: None

This is a project-based class. Students may build sheds, shelters, or other building projects based on client request. The students in this class will be required to work outside in all weather conditions, as long as it is safe to do so. Students can expect to learn how to: read a blueprint, build a structure according to that print, and troubleshoot possible problems with a structure. This class teaches problem-solving, teamwork, cooperation, critical thinking, and occupation skills. This class will be treated as a job. You will fill out an application for the job, be “hired” (registered for the course) and be “paid” for your work. Your “pay” is your grade. Your grade is what you earn.



INTRODUCTION TO TRADES CTE

Grades 9-12, 1 PHS credit, semester course

Prerequisite: None

This course is an introduction to woods, welding, and small engine repair. Students will have an opportunity to try all three venues.



ROBOTICS CTE

Grades 9-12, 1 PHS credit, semester course

Prerequisite: None

This is a beginning course in robotics. The objective of this course is to introduce the student to basic programming as well as problem solving strategies. Robotics is a course that uses a hands-on approach to introduce the basic concepts of robotics, focusing on the construction and programming of autonomous mobile robots.



WELDING & METALS CTE

Grades 10-12, 1 PHS credit, semester course

Prerequisite: None

The main emphasis in this class is welding, with some metal turning. Students in this class will be required to complete several different forms of welds, using the four different processes we have. These processes include: Oxy-Acet., Stick, MIG, and TIG. The machining portion of this class involves turning out a center punch and hammer. Beyond this, students are required to make a project out of metal-welding or machining, or a combination of both.



MATH

INTERMEDIATE ALGEBRA

Grade 9, 2 PHS credits (Year-Long)

Prerequisite: None. This course is required for all freshman.

With Algebra, students can describe patterns of all kinds, work with formulas, discuss unknowns in problems, and quickly graph ideas. Algebra is considered the language of mathematics. The goal of this course is to introduce students to this wonderful and rich language.



ALGEBRA II

Grades 10-12, 2 PHS credits (Year-Long)

Prerequisite: Successfully complete Geometry.

This course is required for all juniors and/or sophomores depending upon math level.

This course continues with the base knowledge from Algebra I and Geometry to study more about variables, equations, and graphs. Students will use the variables, equations, and graphs to model real-life applications. This course may be offered as an online version with the instructor approval.



CALCULUS I

Grade 12, 2.33 PHS credits, semester course, 5 CLC credits

Prerequisite: Student must have successfully completed College Algebra and Pre-Calculus with a C- or higher. Must have a cumulative GPA of a 2.5 for seniors, and a 3.0 cumulative GPA for juniors.

This class offers a review of the concepts and properties of a function. Emphasis is on the graphing and behavior of a function. Limits are introduced and developed. The derivative of a function is defined and applied to algebraic and trigonometric functions. Anti-differentiation and elementary differential equations will also be studied also with the definite integral as a limit of sum and as related to anti-differentiation via the Fundamental Theorem of Calculus. Finally, students will explore applications to maximum, minimum, and related rates.



COLLEGE ALGEBRA

Grades 11-12, 1 PHS credit, semester course, 3 CLC credits

Prerequisite: Must have a cumulative GPA of a 2.5 for seniors, and a 3.0 cumulative GPA for juniors. Must have completed Algebra II with a C- or higher.

The study of functions, theory of equations, inequalities, exponential and logarithmic functions, conic sections, and selected topics from advanced algebra.



GEOMETRY

Grade 10, 2 PHS credits (Year-Long)

Prerequisite: Successfully complete Intermediate Algebra. This course is required for all sophomores and/or freshman depending upon math level.

Geometry is the most tangible mathematical discipline. Geometry is used to describe and organize the space we live in. This class will create a learning atmosphere in which students will investigate, explain, and prove the geometry principals that are being used.



PRE-CALCULUS

Grades 11-12, 2.33 credits, semester course, 5 CLC credits

Prerequisite: Students must have successfully completed College Algebra with a C- or higher.

This course is intended to provide the essential mathematical background needed in Calculus. Topics include equation solving, functions (polynomial, radical, rational, exponential, logarithmic, trig, and inverse trig), identities, applications, and parametric, polar graphing.



INTRODUCTION TO GENERAL STATISTICS

Grades 11-12, 1 PHS credit, semester course

Prerequisite: Must have successfully completed *Intermediate Algebra and Geometry*.



This project based class will be building on the skills students should have mastered in the previous grades. With a focus on problem solving and basic understanding of real world application, students will organize, interpret and give justified estimates of data. We will look at statistics that are of interest to the student. Technology will be a large asset to the students throughout the semester. Students will learn the functionality of Google Sheets. Outcomes are all based on Minnesota State Mathematical Standards.

BEGINNING COLLEGE ALGEBRA

Grades 11-12, 1 PHS credit, semester course

Prerequisite: Successfully complete *Algebra II* with a "C-" or higher.

This course is taken for a high school credit. This course will intensify the study of concepts first seen in *Intermediate Algebra*, as well as introduce topics that will be covered in *College Algebra*. A basic understanding of solving equations and using function notation will be expected, so that students can investigate solving systems of equations in three variables, systems of non-linear equations, polynomial equations, and basic exponential and logarithmic equations. Additionally, function operations and graphing function transformations will be introduced and explored.

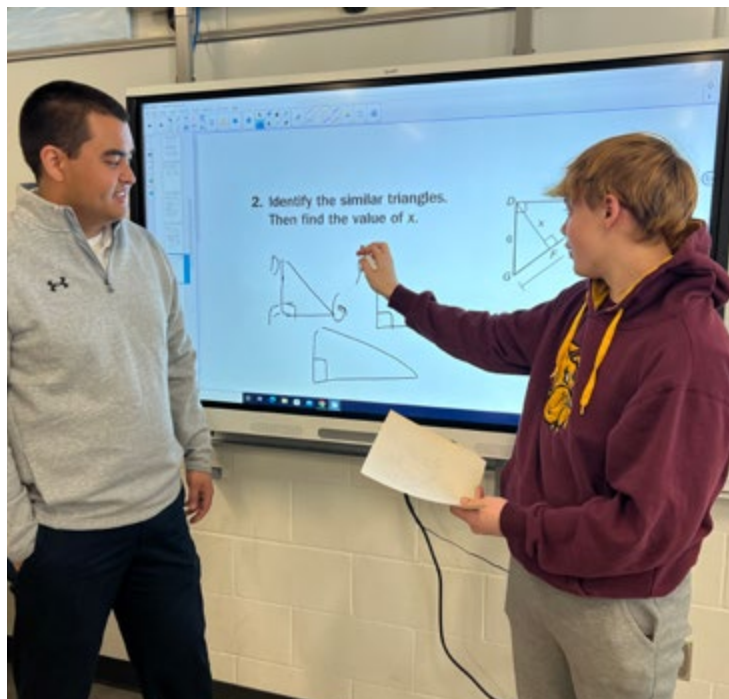
TRADES MATH CTE

Grades 11-12, 1 PHS credit, semester course

Prerequisite: None



Trades people need to be confident and accurate with arithmetic operations. Students interested in going into the trades professions will be exposed to measuring in both imperial and metric, using and converting between fractions, decimals, and percentages, using equations and formulas to solve real-world problems, and using rate, ratio, and proportion. Students will apply math operations to solve construction problems and create a materials list based on different scenarios.



MUSIC



CONCERT BAND *Fine Arts*



Grades 9-12, 2 PHS credits
(Year-Long), 2 CLC credits

Prerequisite: Necessary skills and interest needed to play music at this level. Prior experience playing your chosen instrument.

This course can be taken for a high school or college credit. Senior band prepares music-to-perform, using music of all styles and historical periods. Concert attendance is required. Loving music, learning to appreciate it, and experimenting with various styles are priorities. A certain amount of lessons per quarter will be required. Contests, pep band, and jazz band are branches of senior band.



CONCERT CHOIR *Fine Arts*



Grades 9-12, 2 PHS credits
(Year-Long), 2 CLC credits

Prerequisite: Must apply to CLC and be accepted as a student before college credit can be granted.

Concert Choir is a full-year course with musical focus on choral literature in a wide variety of styles. We perform throughout the school year, with day travel including concerts, contests, and festivals. The choir does a multi-night trip every two years.

PHYSICAL EDUCATION & HEALTH

HEALTH & WELLNESS

Grades 9-12, 1 PHS credit, semester course

Prerequisite: None. This is a required course for all students but can be replaced by a PSEO Health class if the student meets the PSEO qualifications.

The health topics include the following areas: nutrition, CPR/first aid, drug use and abuse, physical fitness, self-esteem, stress, depression, suicide, reproductive health, healthy and unhealthy coping skills, and relationships. Students will apply a decision-making model to help make choices regarding health issues. This course will also include strength and cardiovascular training components and a variety of game activities. This is a required course and can be taken any time during grades 9-12.



SPORTS CONDITIONING

Grades 9-12, 1 credit, semester course

Prerequisite: None

This course is designed to provide the student-athlete with an opportunity to develop and improve agility, speed, endurance, explosive power plus help prevent injuries and increase flexibility. Activities will consist primarily of strength training, conditioning, and plyometric/agility drills.

LIFETIME SPORTS

Grades 9-12, 1 PHS credit, semester course

Prerequisite: None

This class will include activities, such as running, canoeing, golf, Biking, frof, bowling, fishing, and skiing. In addition, students will be taking a trip to a local sports facility to learn more about the field of sports management.

OUTDOOR ACTIVITIES

Grades 9-12, 1 PHS credit, semester course

Prerequisite: None

This course provides an overview of dual and individual sports. Students learn about a variety of sports and do an in-depth study of hiking, canoeing, fishing, golf, and more. Students learn not only the history, rules, and guidelines of each sport but practice specific skills related to many of these activities. Students also learn the FITT principles, benefits of fitness, weather, and water safety, and technique. Students conduct fitness assessments, set goals, and participate in weekly physical activity.



SPORT & FITNESS

Grades 9-12, 1 PHS credit, semester course

Prerequisite: None

This course provides students with an overview of team sports. Students learn about a variety of team sports and dance. Students learn not only the history, rules, and guidelines of each sport but practice specific skills related to each activity. Students also learn about game strategy and the benefits of sports. In addition, students study elements of personal fitness, goal setting, sports safety, personal expression through dance, and sports nutrition. Students conduct a pre-and post-fitness assessment, as well as participate in regular weekly physical activity such as fitness workouts and/or strength training.

FITNESS WALKING ONLINE

Grades 11-12, 1 PHS credit, semester course, 2 CLC credits

Prerequisite: Must apply to CLC and be accepted as a student before college credit can be granted.



This is an independent study course. In this course students will study elements of their personal fitness, set personal goals, and learn about fitness safety. There will be a range of 3-5 hours a week of aerobic conditioning that requires a student to maintain a specific heart rate zone along with other activities.

SCIENCE

NATURAL RESOURCES I & II

Tech Prep Credit

Grades 9-12, 1 PHS credit, semester course

Prerequisite: None. Students registering for Natural Resources II need to successfully pass Natural Resources I.

Nature is all around us. But how often do you think about what actually goes on in the environment? In this course, we'll be taking a peek "behind the scenes" to explore the biological principles that drive the forces of nature. We'll learn about how resources (like forests and wildfire) are used and managed and how society interacts with the environment.



LIFE SCIENCE CHEMISTRY

Grades 11-12, 2 PHS credits (Year-Long), 4 CLC credits

Prerequisite: Students must successfully complete Physical Science. Students must have an overall GPA of a 3.0 or higher as a junior or as a 2.5 as a senior.



This course will provide the student with an introduction to general, organic and biological chemistry. Topics include: scientific measurement, atomic and molecular structure, periodicity, chemical bonding, nomenclature, chemical reactions, nuclear chemistry, solutions, acids, bases, organic functional groups, carbohydrates, lipids, amino acids, proteins and enzymes. The laboratory will reinforce lecture concepts. MnTC Goal 3. This course is intended for science majors or those students planning on entering the health care field.



FORENSIC SCIENCE

Grades 9-12, 1 PHS credit, semester course

Prerequisite: Physical Science

This course is designed to introduce students with the basics of forensic science. Forensic science is the study and application of science to the legal system. This involves many things including evidence collection, crime scene management, and evaluation of evidence. Students will be involved in simulated crime scenes where they will practice these skills. The course will review basic principles covered in biology and chemistry while looking at them as they apply to Forensics. By doing this, students will become aware of the capabilities and limitations of the field of Forensic Science.



CRIME SCIENCE INVESTIGATION

Grades 9-12, 1 PHS credit, semester course

Prerequisite: Physical Science

Explore the scientific world by learning how to become a Crime Scene Investigator. Students will learn and demonstrate proficiency in several lab techniques used in the field of Forensics. Topics covered might include: Fingerprinting, blood spatter, document analysis, ballistics, imprints (shoe, tire, tools), glass analysis and crime scene processing. Students will then become aware of both the capabilities and limitations of these techniques. Students will also explore different career fields related to solving crimes.



GENERAL BIOLOGY

Grade 10, 2 PHS credits (Year-Long)

Prerequisite: Physical Science. This course is required for all sophomore students.

Biology is the study of life and living systems. This course explores the major principles of biology as they apply to the major kingdoms of life.



HUMAN ANATOMY

Grades 9-12, 1 PHS credit, semester course

Prerequisite: Strong math background.

This is an advanced biology course that should be of particular interest to those students planning on health care or animal science career. This course will offer a detailed look at higher vertebrate anatomy and physiology. Lab work includes hands-on experience with most major body systems through dissections including a fetal pig.



PHYSICAL SCIENCE 9

Grade 9, 2 PHS credits (Year-Long)

Prerequisite: This course is required for all freshmen.

Physical Science is the study of matter and energy. Major units include the metric system, atoms, compounds, chemical reactions, different forms of energy, simple machines, static electricity, and current electricity.



CHEMISTRY

Grade 11-12, 2 PHS credits (Year-Long)

Prerequisite: Students must have successfully completed Physical Science and General Biology.

Chemistry is the study of matter and energy. This course explores the major principles of chemistry including; the periodic table, atoms, chemical compounds, chemical reactions, acids and bases, and other principles that will help prepare you for heading into a post-secondary college program.



AQUATIC BIOLOGY

Grade 10-12, 1 PHS credit, semester course

Prerequisite: None

This course is designed to increase your awareness of the world's freshwater resources. It provides a general overview of aquatic systems including physical processes, aquatic biota, ecosystem processes and conservation. We will mainly focus on local water habitats and issues. By the end of the course, you should be able to quickly identify many local aquatic and riparian organisms. Laboratories include use of field equipment, field research techniques, and identification of aquatic organisms including: protozoa, invertebrates, fish, plants, and related terrestrial or avian organisms. We will also explore some of the unique environmental problems dealing with aquatic environments.



ENVIRONMENTAL BIOLOGY

Grade 10-12, 1 PHS credit, semester course

Prerequisite: Must have successfully completed General Biology.

Environmental biology is the relationship of humans to their environment from local, regional, and global perspectives. We will be studying the natural ecosystems, the impact of human activity on natural resources and environmental quality, environmental ethics, and strategies to maintain a sustainable biosphere. You will develop skills in observation and in objective analysis, scientific inquiry, and in oral and written communications. The course involves a great deal of researching and writing, and an extensive vocabulary with which you will be expected to gain a familiarity with. You will be presented information ranging from factual to opinionated and emotional. The study of environment is not cut-and-dried. It is instead very dynamic, subject to opinion and heated debate, new interpretations, and often, misleading information. This course is an attempt to help you sort out some of the different aspects of this topic.



SOCIAL STUDIES

COLLEGE WORLD HISTORY I

Grades 11-12, 1 PHS credit, semester course, 3 CLC credits

Prerequisite: Successfully complete Civics and U.S. History. Seniors must have an overall GPA of 2.5, and juniors must have an overall GPA of 3.0. This course can take the place of the required high school World History.

This course looks at early man through to the time of Revolution. This class will focus on the Ancient civilizations of Europe, the Middle East, and Asia. We will look at the geography, history, art and how they have influenced us today. This course will use various skills, such as: art, computer web searches, and reading and discussions.



COLLEGE WORLD HISTORY II

Grades 11-12, 1 PHS credit, semester course, 3 CLC credits

Prerequisite: Successfully complete Civics and U.S. History. Seniors must have an overall GPA of 2.5, and juniors must have an overall GPA of 3.0. This course can take the place of the required high school World History.

This course will explore the major developments in world history from 1500 to the present. Topics will include the development of major culture areas and cultural groups that existed in 1500, the influence of European expansion and colonialism, democratic revolutions, industrialization, movements for national liberation, and the rise of the global economy.



WORLD HISTORY

Grade 11, 2 PHS credits (Year-Long)

Prerequisite: Successfully complete Civics and US History. This is a required course for all juniors.

World History (General) is an in-depth study of our global community's past, emphasizing the people and events that changed past societies, and how these changes affect our modern society.



CIVICS

Grade 9, 2 PHS credits (Year-Long)

Prerequisite: None. This is a required course for all freshman.

This course covers the history of the United States government from its beginnings of the 13 colonies to present. Students will begin to understand the roles the US Constitution plays in their daily lives, as well as the branches of government and their role. They will look at the functions of government at the national, state, and local level. Students will also study the many different roles of a US citizen. Students will use computers to research on-line sources and current events. Students will be required to take a hands on approach to civic duty and volunteer 12 hours to their local communities during the school year. Current events will be discussed monthly.



ECONOMICS

Grade 12, 1 PHS credit, semester course

Prerequisite: Must successfully complete Civics, and U.S. History.

This is a required course for all seniors.



Students will study the basic concepts of personal economics. Subjects will include but not be limited to Consumerism, Analyzing Advertising, & Money Management. Credit Savings & Checking. This course may be also be available in an online asynchronous format.



U.S. HISTORY

Grade 10, 2 PHS credits (Year-Long)

Prerequisite: Must successfully complete

Civics. This is a required course for all sophomores.

Students in this course will look at the major themes in U.S. History, and see how our Nation has changed in addition to how our past has shaped our future. This class will also keep students up to date on current events so they see history in the making.



CRIMINAL JUSTICE

Grades 10-12, 1 PHS credit, semester course

Prerequisite: None.

Students will explore the development of the U.S. criminal justice system, focusing both on the social values which form the basis for this institution and on the particular institutional arrangements through which society aspires to foster responsible behavior among its citizens. It will examine the broad ideals of justice and the underlying assumptions about the personal rights and obligations that come with membership in a society. It will also analyze the workings of the criminal justice system within the context of a free society characterized by broad human diversity



GLOBAL STUDIES

Grade 10-12, 1 PHS credit, semester course, 3 CLC credits

Prerequisite: Seniors must have a cumulative GPA of 2.5, and juniors

must have a cumulative GPA of 3.0, Sophomores must have a cumulative GPA of 3.0 and rank in the 90th percentile or higher on a nationally normed standardized test or be in the top 10% of their class

This course introduces students to the basic concepts, trends, perspectives and interconnections of global society. Through readings, discussions, videos, webcasts and other activities, students examine the interdependence of people around the world and global issues that affect these relationships. This course will provide an overview of the history and theoretical approaches that have created a global society through topics such as global politics, human rights, the natural environment, population, disease, gender, information technology, war and peace. By the end of the course, you will be able to apply theories to understand current world events and recognize similarities and differences between cultures and environments.

CLC CENTRAL LAKES COLLEGE



WORLD LANGUAGE

SPANISH I

Grades 9-12, 2 PHS credits (Year-Long)

Prerequisite: Must have knowledge in the mechanics of the English language, and feel comfortable with grammar, and sentence structure.

Spanish I is an introduction to the Spanish language through the use of oral practice, written and reading materials. Four area of emphasis includes speaking, listening, reading and writing in the Spanish language. Videos, music and games are used to reinforce these skills.



SPANISH II

Grades 10-12, 2 PHS credits (Year-Long)

Prerequisite: Must have successfully completed Spanish I with a C or higher

Spanish II is a direct continuation of Spanish I. This course stresses the skills of comprehension as well as speaking and writing. Students move towards more original expression in the Spanish language. It is very important that students know how to conjugate verbs and formulate a simple sentence before taking Spanish II.



FRESHMAN REGISTRATION FORM

Name: _____ College & Career Goal: _____

All Freshmen are required to register for 14 courses. All students must have 14 boxes checked.

	FALL SEMESTER	SPRING SEMESTER
English - 2 credits Check 1 box per semester	<input type="checkbox"/> Intro. To Language Arts <input type="checkbox"/> _____ (placement by counselor/case mgr)	<input type="checkbox"/> Intro. To Language Arts <input type="checkbox"/> _____ (placement by counselor/case mgr)
Math - 2 credits Check 1 box per semester	<input type="checkbox"/> Intermediate Algebra OR <input type="checkbox"/> Geometry (must meet district criteria) <input type="checkbox"/> _____ (placement by counselor/case mgr)	<input type="checkbox"/> Intermediate Algebra OR <input type="checkbox"/> Geometry (must meet district criteria) <input type="checkbox"/> _____ (placement by counselor/case mgr)
Science - 2 credits Check 1 box per semester	<input type="checkbox"/> Physical Science	<input type="checkbox"/> Physical Science
Social Studies - 2 credits Check 1 box per semester	<input type="checkbox"/> Civics	<input type="checkbox"/> Civics
Freshman Academy- 1 credit Check 1 box per semester	<input type="checkbox"/> Freshman Academy	<input type="checkbox"/> Freshman Academy
Electives - 6 credits Check 3 boxes per semester <i>Note: Students are required to take the following some time during grades 9-12:</i> <ul style="list-style-type: none"> 1 credit Phy. Ed. 1 credit of Health 2 credits of CTE 	<input type="checkbox"/> _____ <input type="checkbox"/> _____	<input type="checkbox"/> _____ <input type="checkbox"/> _____
Alternate Choices are extremely important! If your first choice classes are not available, office staff will use your alternate choices to complete your schedule.	1. _____ 2. _____ 3. _____	1. _____ 2. _____ 3. _____

SOPHOMORE REGISTRATION FORM

Name: _____ College & Career Goal: _____

All Sophomores are required to register for 14 courses. All students must have 14 boxes checked.

	FALL SEMESTER	SPRING SEMESTER
English - 2 credits Check 1 box per semester	<input type="checkbox"/> U.S. Literature & Composition <input type="checkbox"/> _____ (placement by counselor/case mgr)	<input type="checkbox"/> U.S. Literature & Composition <input type="checkbox"/> _____ (placement by counselor/case mgr)
Math - 2 credits Check 1 box per semester	<input type="checkbox"/> Geometry OR <input type="checkbox"/> Algebra II (must meet district criteria) <input type="checkbox"/> _____ (placement by counselor/case mgr)	<input type="checkbox"/> Geometry OR <input type="checkbox"/> Algebra II (must meet district criteria) <input type="checkbox"/> _____ (placement by counselor/case mgr)
Science - 2 credits Check 1 box per semester	<input type="checkbox"/> General Biology	<input type="checkbox"/> General Biology
Social Studies - 2 credits Check 1 box per semester	<input type="checkbox"/> U.S. History	<input type="checkbox"/> U.S. History
Electives - 6 credits Check 2 boxes per semester <i>Note: Students are required to take the following some time during grades 9-12:</i> <ul style="list-style-type: none"> 1 credit Phy. Ed. 1 credit of Health 2 credits of CTE 	<input type="checkbox"/> _____ <input type="checkbox"/> _____ <input type="checkbox"/> _____	<input type="checkbox"/> _____ <input type="checkbox"/> _____ <input type="checkbox"/> _____
Alternate Choices are extremely important! If your first choice classes are not available, office staff will use your alternate choices to complete your schedule.	1. _____ 2. _____ 3. _____	1. _____ 2. _____ 3. _____

JUNIOR REGISTRATION FORM

Name: _____ College & Career Goal: _____

All Juniors are required to register for 14 courses. All students must have 14 boxes checked.

	FALL SEMESTER	SPRING SEMESTER
English - 2 credits Check 1 box per semester	<input type="checkbox"/> World Literature & Composition <input type="checkbox"/> Composition I (CIS) <input type="checkbox"/> _____ (placement by counselor/case mgr)	<input type="checkbox"/> World Literature & Composition <input type="checkbox"/> Composition II (CIS) <input type="checkbox"/> _____ (placement by counselor/case mgr)
Math - 2 credits Check 1 box per semester	<input type="checkbox"/> Algebra II OR <input type="checkbox"/> Beginning College Algebra (must meet district criteria) <input type="checkbox"/> _____ (placement by counselor/case mgr)	<input type="checkbox"/> Algebra II OR <input type="checkbox"/> College Algebra (must meet district criteria) <input type="checkbox"/> _____ (placement by counselor/case mgr)
Science - 2 credits Must complete 2 elective science classes during 11th and/or 12th grade	<input type="checkbox"/> _____	<input type="checkbox"/> _____
Social Studies - 2 credits required Check either the high school World History or the college World History	<input type="checkbox"/> World History OR <input type="checkbox"/> College World History I	<input type="checkbox"/> World History OR <input type="checkbox"/> College World History II
Electives - 4-6 credits Check 4-6 boxes per semester <i>Note: Students are required to take the following some time during grades 9-12:</i> <ul style="list-style-type: none"> 1 credit Phy. Ed 1 credit of Health 2 credits of CTE 	<input type="checkbox"/> _____ <input type="checkbox"/> _____ <input type="checkbox"/> _____	<input type="checkbox"/> _____ <input type="checkbox"/> _____ <input type="checkbox"/> _____
Alternate Choices are extremely important! If your first choice classes are not available, office staff will use your alternate choices to complete your schedule.	1. _____ 2. _____ 3. _____	1. _____ 2. _____ 3. _____

SENIOR REGISTRATION FORM

Name: _____ College & Career Goal: _____

All Seniors are required to register for 14 courses. All students must have 14 boxes checked.

	FALL SEMESTER	SPRING SEMESTER
English - 2 credits Check 1 box per semester	<input type="checkbox"/> Intro to Literature <input type="checkbox"/> Composition I <input type="checkbox"/> Work & Writing Seminar <input type="checkbox"/> _____ <input type="checkbox"/> _____ (placement by counselor/case mgr)	<input type="checkbox"/> Science Fiction & Fantasy <input type="checkbox"/> Composition II <input type="checkbox"/> Work & Writing Seminar <input type="checkbox"/> _____ <input type="checkbox"/> _____ (placement by counselor/case mgr)
Math – optional, but highly recommended	<input type="checkbox"/> Trades Math OR <input type="checkbox"/> Pre-Calculus (must meet district criteria) <input type="checkbox"/> _____ (placement by counselor/case mgr)	<input type="checkbox"/> Trades Math OR <input type="checkbox"/> Calculus (must meet district criteria) <input type="checkbox"/> _____ (placement by counselor/case mgr)
Science - 2 credits Must complete 2 elective science classes during 11th and/or 12th grade	<input type="checkbox"/> _____ <input type="checkbox"/> _____	<input type="checkbox"/> _____ <input type="checkbox"/> _____
Social Studies - 1 credit required One semester of Economics is required (check the box for either fall semester or spring semester) Check 1-2 boxes per semester	<input type="checkbox"/> Economics <input type="checkbox"/> World Religions	<input type="checkbox"/> Economics <input type="checkbox"/> Intro. To Sociology (CIS)
Electives - 4-6 credits Check 4-6 boxes per semester <i>Note: Students are required to take the following some time during grades 9-12:</i> <ul style="list-style-type: none"> • 1 credit Phy. Ed. • 1 credit of Health • 2 credits of CTE 	<input type="checkbox"/> _____ <input type="checkbox"/> _____ <input type="checkbox"/> _____ <input type="checkbox"/> _____	<input type="checkbox"/> _____ <input type="checkbox"/> _____ <input type="checkbox"/> _____ <input type="checkbox"/> _____
Alternate Choices are extremely important! If your first choice classes are not available, office staff will use your alternate choices to complete your schedule.	1. _____ 2. _____ 3. _____	1. _____ 2. _____ 3. _____

CREDIT INVENTORY

All Pillager High School students need a minimum of 52 credits to graduate.

Below are the core courses that are required to graduate. Please note, students also need a minimum of 20 elective credits for graduation (core + electives = 52 credits).

STUDENT NAME: _____ **DATE:** _____

COURSES	CREDIT	COMPLETED
LANGUAGE ARTS		
Intro to Language Arts (grade 9, year-long)	2	
U.S. Lit & Composition (grade 10, year-long)	2	
World Lit & Composition (grade 11, year-long) or College Comp I & II (grade 11 or grade 12, year-long)	2	
English Elective (grade 12, one semester)	1	
English Elective (grade 12, one semester)	1	
SOCIAL STUDIES		
Civics (grade 9, year-long)	2	
U.S. History (grade 10, year-long)	2	
World History (grade 11, year-long) or College World History I & II (grade 11 or grade 12, year-long)	2	
Economics (grade 12, 1 semester)	1	
MATHEMATICS		
Intermediate Algebra (grade 9, year-long) or Geometry (grade 9, year-long)	2	
Geometry (grade 9, 10, year-long)	2	
Algebra II (grade 10, 11, year-long) or Beg College Algebra & College Algebra (grade 11, 12, year-long)	2	
SCIENCE		
Physical Science (grade 9, year-long)	2	
General Biology (grade 10, year-long)	2	
Science Elective (elective must include either a chemistry or physics component) (grade 10, 11, 12, one semester)	1	
Science Elective (grade 9, 10, 11, 12, one semester)	1	
FINE ARTS		
Fine Arts Elective (grade 9, 10, 11, 12, one semester)	1	

PHYSICAL EDUCATION & HEALTH		
Physical Education (grade 9, 10, 11, 12, one semester)	1	
Health & Wellness (grade 9, 10, 11, 12, one semester)	1	
CAREER & TECHNICAL EDUCATION		
CTE Elective (grade 9, 10, 11, 12, one semester) or Computer	1	
CTE Elective (grade 9, 10, 11, 12, one semester) or Computer	1	
ELECTIVE CREDITS	20	
TOTALS		
Total earned credits to date	Total:	
Credits to be earned this year	Total:	
Grand Total Credits Projected	Grand Total:	

Pillager High School 4 year Registration: Make A Plan!

SUBJECT		9th Grade Fall	9th Grade Spring	10th Grade Fall	10th Grade Spring	11th Grade Fall	11th Grade Spring	12th Grade Fall	12th Grade Spring
Graduation Requirements	ENGLISH (8)	Intro to Lang Arts	Intro to Lang Arts	US Lit & Comp	US Lit & Comp	World Lit & Comp College Comp I	World Lit & Comp College Comp II		
	MATH (6)	Inter Algebra	Inter Algebra	Geometry	Geometry	Algebra II Begin College Alg	Algebra II College Algebra		
	SCIENCE (6)	Physical Science	Physical Science	Gen Biology	Gen Biology				
	SOCIAL (7)	Civics	Civics	US History	US History	World Studies	World Studies	Economics	
	PE (1)								
	Health (1)								
	COMPUTER or CTE (2)								
	FINE ARTS (1)								
Electives									
Experiences	Career Fair								
	Classroom Speaker								
	Reality Store								
	Job Shadow Tour								
	Field Trip								
	Internship								
	On-the-Job Training								
Assessments	Apprentice								
	Entrepreneurial Oppty								
	Required Tests			MCA Science, Reading		MCA Math			
	College Prep Tests	PreACT				PSAT, ACT		ACT	
	Optional Tests			Accuplacer, ASVAB		Accuplacer, NCRC, Precision Exams		Accuplacer, NCRC, Precision Exams	

**YOU CAN GO
ANYWHERE
FROM HERE!**



**323 East Second St. S. • Pillager, MN 56473
746.2116 • 746.3406 Fax**